



TPG1H, TPG1SH, TPG1XH

Speed Spool Bait Cast reels
are designed to be **Lighter, Faster and Stronger**

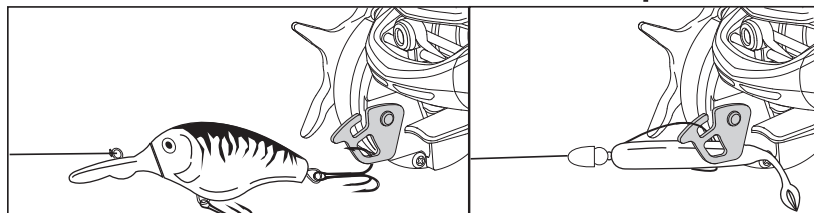
Driven by innovation – Fueled with Passion
Feel the Difference!

TOURNAMENT_{pro}
SPEED SPOOL[®] LFS

Reel Specifications

Model	Weight	Gear Ratio	Line Capacity	IPT
TPG1H	6.2 OZ.	6.8:1	120/12 LB.	28"
TPG1HL	6.2 OZ.	6.8:1	120/12 LB.	28"
TPG1SH	6.2 OZ.	7.5:1	120/12 LB.	31"
TPG1XH	6.2 OZ.	8.3:1	120/12 LB.	35"

Exclusive **SPEED KEEPER** Hook Keeper



Innovative Line Recognition Speed Dial

Your Speed Spool[®] reel features a convenient line indicator dial on the spool's tension knob. Quickly recognize what line type and line weight you have loaded on your reel.

SPEED DIAL



FEATURES:

- Exclusive Speed Keeper Hook Keeper (pat. pend.)
- One-piece diecast aluminum frame
- Drilled and forged, anodized aluminum 16 hole U-spool
- Lightweight C40 carbon left and right sideplates
- SpeedCast[®] externally adjustable Centrifugal Brake System
- Rugged carbon composite drag system - provides up to 14 lbs. of drag power
- Ti coated zirconia line guide
- 95MM bowed carbon handle with duracork/EVA paddle shaped knobs
- External lube port

Performance – **Right out of the Box!**

Our new Speed Spool LFS baitcast reel by Lew's[®] is designed for performance and functionality. From the way it conforms to your hand, to the way it reacts crisply and effortlessly to your command, you'll know the minute you grab onto the Speed Spool[®] that you've got a quality reel.

Your Speed Spool[®] reel exploits several new developments which will allow you to set yourself apart from the competition.

High Strength Aluminum Gearing

The drive gear, crankshaft, and worm shaft are made of high strength aluminum for increased strength and durability. In addition to these advantages, aluminum provides exceptionally low friction to enhance efficiency.

One-piece Die Cast Aluminum Frame

Your Speed Spool[®] reel utilizes a one-piece all aluminum frame. So you'll never have to worry about frame twisting or torquing.

Lightweight Machined Aluminum Spool

Machined Aluminum Spool

The spool on your Lew's[®] reel has been engineered to maximize casting distance. Anodized to withstand oxidation and abrasion, machined and built for deep capacity.

Zero-Reverse Anti-Reverse Bearing

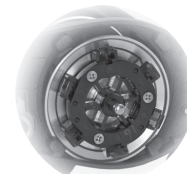
The handle on your Speed Spool[®] reel will only rotate forward for rock solid hook setting. When you release the handle it will hold its position because of Anti-Reverse bearings, never losing an inch on your catch; an invaluable property to have when you're pulling it in.

11 Bearing System

Externally Adjustable Centrifugal Brake System

The SpeedCast[®] Adjustable Centrifugal Brake System delivers an extreme range of braking power from free spool to maximum by simply clicking its external dial to choose among 27 variable settings. The Tournament Pro Speed Spool puts you in control of your casts, perfectly aligning brake power to lure size. With this system you will have more casting control over light lures, while maximizing casting distance with all lures.

SpeedCast[®] 16-BIN
ADJUSTABLE CENTRIFUGAL BRAKE



Cast Control System/Speed Dial

A second feature exists to prevent backlash, the Cast Control System. An adjustment knob is found next to the star drag. The function saddles the spool shaft with steady pressure in order to stabilize spool speed.

To calibrate the system reel your lure in until it rests on the tip of the rod, then tighten the knob until taut. Depress the thumb bar, and holding the rod horizontally loosen the knob slowly until the lure begins to descend. The spool should continue to spin after the lure contacts the ground, but should not complete more than one full rotation. If the spool does not continue to spin, the knob is too tight. If the spool completes more than one rotation, the knob is too loose. Repeat until you have achieved the desired results.

To set your Speed Dial, simply insert thumbnail or small coin in slot located in the center of the Speed Dial and turn the arrow marked M/B (mono or braid) or F (fluorocarbon) to the desired line rating number.

Bowed 95MM Carbon Fiber Handle

Our 95mm bowed carbon fiber handle will give you all the cranking power you need. The Lew's[®] custom paddle handle knobs are an added bonus and will provide comfortable fit and ease for all day fishing.



TOURNAMENT^{pro} SPEED SPOOL[®] LFS

TPG1H, TPG1SH, TPG1XH

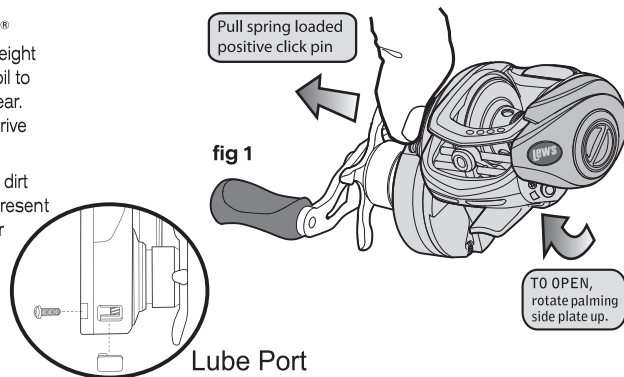
Maintenance and Care

To remove the palming side plate, rotate palming side plate up while pulling the plunger located on the gear side-plate out.

When applying lubricant to your Speed Spool[®] reel, avoid using multi-purpose oil. Use lightweight oils or greases made for fishing reels. Apply oil to all bearings, the crank shaft, and the worm gear. Apply grease to the bushings, pinion gears, drive gears, and crank gears.

After usage your reel should be inspected for dirt or sand and cleaned if excessive buildup is present. If your reel has come in contact with saltwater it is important to flush all parts with water, dry and re-lubricate your reel. Through diligent cleaning and maintenance your Lew's[®] reel will provide you with years of reliability and sound performance.

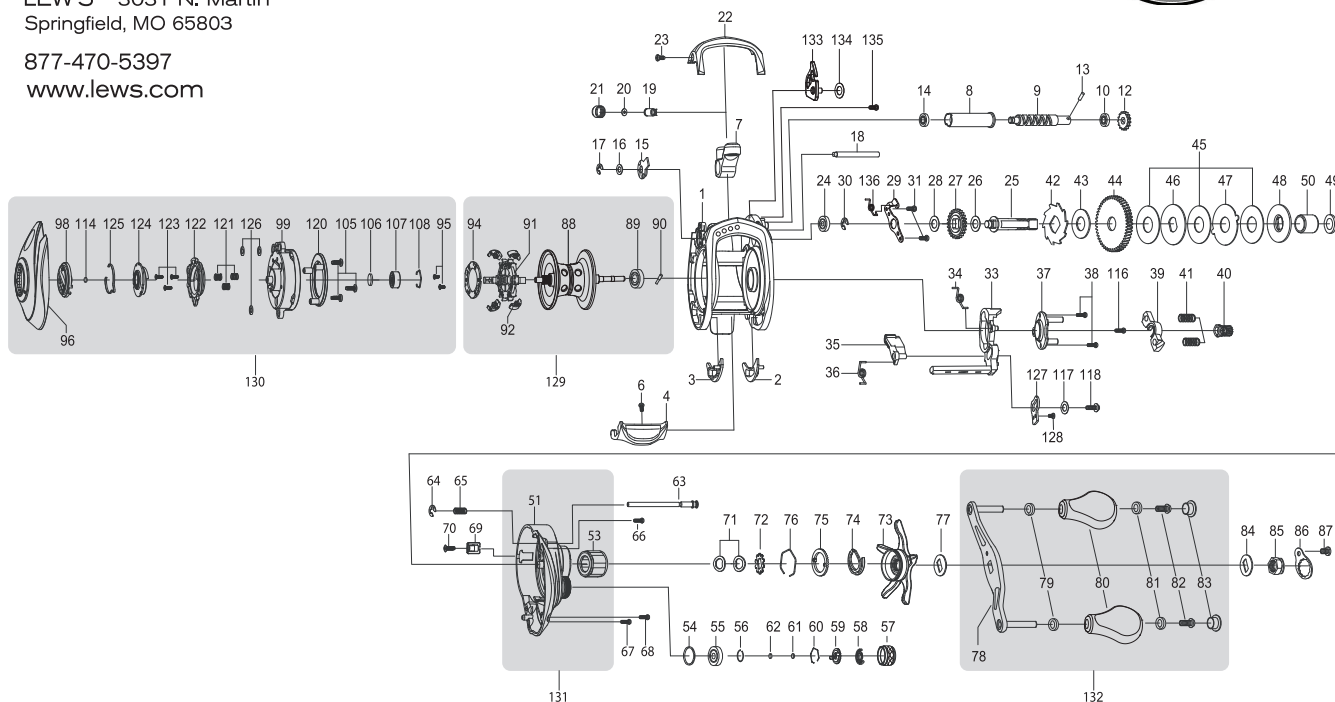
fig 1 To remove side cover pull side-plate click pin pry front cover away from body to access components



For professional cleaning and maintenance send your reel postage prepaid to:

LEW'S[®] 3031 N. Martin
Springfield, MO 65803

877-470-5397
www.lews.com



One Year Limited Warranty

Lew's[®] warrants its products¹ to withstand normal² use for the purpose designed and intended when manufactured for a period of one (1) year from the original retail sale date to the original retail consumer. Lew's will at its option repair or replace³ Lew's[®] products when required for the warranty period and return⁴ the product to the owner at no additional⁵ cost to the owner.

¹Numerous products have been manufactured under variations of the Lew's[®] name and under the Lew's[®] Logo by multiple businesses over the past 50 years. This warranty is specifically for products manufactured on behalf of Lew's[®] of Springfield, Missouri USA since January 1, 2010. Lew's[®] products manufactured by or on behalf of other entities prior to January 1, 2010 are not covered by this warranty. In all circumstances, this Warranty is Limited in Value to the original retail value of the product and is limited to actual damage to the Lew's[®] product and only the Lew's[®] product. ²Loss of a product, and loss/damage of a product or parts due to the attempted repair or servicing of a Lew's[®] product by any person or business other than Lew's[®] or Lew's[®] Authorized Warranty Service Agent, and damage caused by or resulting from abuse, misuse, lack of recommended maintenances, accident, acts of God, and shipping damages occurring in transit to Lew's[®] or Lew's[®] Authorized Agent are outside the scope of Lew's[®] Limited Warranty and will be repaired through Lew's[®] after warranty service at the expense of the consumer. ³Any products replaced by Lew's[®] will be new or remanufactured by a Lew's[®] Authorized Agent with same or next model upgrade product. ⁴Lew's[®] will return warranted products to the consumer by reasonable means as determined by Lew's[®]. ⁵Express or expedited services are the responsibility of the consumer as is sending the product to Lew's[®] Authorized Agent, for Warranty Service. Lew's[®] and Lew's[®] Service Agents as authorized by Lew's[®] are the sole agents authorized to repair or replace Lew's[®] products under the terms of this warranty. Only written changes by an officer of Lew's[®] can alter the terms or conditions of the warranty.

This warranty gives you specific legal rights including additional rights extended by some states which do not allow certain exclusions and limitations. Any action brought against Lew's[®] for the purpose of setting a warranty dispute shall be brought and litigated in the State of Missouri, County of Greene.

Lew's[®] 3031 N. Martin, Springfield, MO 65803 Phone : 1-417-881-LEWS(5397) FAX : 1-417-881-5387

Key#	Part Name	Key#	Part Name	Key#	Part Name
1	FRAME	44	DRIVE GEAR	85	HANDLE NUT
2	CLUTCH BAR PLATE-R	45	DRAG WASHER-L	86	HANDLE NUT RETAINER
3	CLUTCH BAR PLATE-L	46	DRAG WASHER-D1	87	SCREW
4	CLUTCH BAR	47	DRAG WASHER-A	88	SPOOL ASSEMBLY
6	CLUTCH BAR SCREW	48	DRAG WASHER-D2	89	BALL BEARING
7	LEVEL WIND ASSEMBLY	49	SLEEVE WASHER(OPTIONAL)	90	PIN
8	PIPE	50	SLEEVE	91	BRAKE HOLDER
9	WORM SHAFT	51	GEAR SIDE COVER ASSEMBLY	92	BRAKE SHOE
10	BALL BEARING	53	ONE WAY CLUTCH	94	BRAKE HOLDER PLATE
12	IDLER-S	54	O-RING	95	SCREW
13	WORM SHAFT PIN	55	BALL BEARING	96	PALM SIDE COVER ASSEMBLY
14	BALL BEARING	56	C-RING	98	CONTROL DIAL
15	WORM SHAFT BUSHING-B	57	CAST CONTROL CAP/SPEED DIAL	99	SPOOL COVER
16	WORM SHAFT WASHER	58	CLICKER	105	SPOOL COVER SCREW
17	E-RING	59	CLICK PLATE	106	SPOOL SPACER-A
18	PILLAR	60	CLICK PLATE RETAINER	107	BALL BEARING
19	LEVEL WIND PIN	61	TENSION WASHER	108	BEARING RETAINER
20	SPACER(OPTIONAL)	62	SPOOL SPACER-B	114	WASHER(OPTIONAL)
21	LEVEL WIND NUT	63	LOCKING PIN	116	CAM PLATE SCREW
22	FRONT COVER	64	E-RING	117	CLUTCH WASHER
23	FRONT COVER SCREW	65	LOCKING PIN SPRING	118	CLUTCH SCREW
24	BALL BEARING	66	GEAR SIDE COVER SCREW-A	120	BRAKE PLATE HOLDER ASSEMBLY
25	CRANK SHAFT	67	GEAR SIDE COVER SCREW-B	121	SLIDE CAM SPRING
26	IDLER-L WASHER-A	68	GEAR SIDE COVER SCREW-C	122	SLIDE CAM-H
27	IDLER-L	69	LUBE PORT CAP	123	SLIDE CAM SCREW
28	IDLER-L WASHER-B	70	LUBE PORT CAP SCREW	124	SLIDE CAM-D
29	BEARING PLATE	71	DRAG SPRING WASHER	125	CLICK SPRING
30	E-RING	72	CLICK HOLDER	126	SPOOL COVER SPACER(OPTIONAL)
31	BEARING PLATE SCREW	73	STAR DRAG	127	LINK PLATE
33	CLUTCH CAM	74	CLICKER	128	LINK PLATE SCREW
34	CLUTCH SPRING	75	CLICK PLATE	129	SPOOL COMPLETE
35	KICK LEVER	76	CLICK PLATE RETAINER	130	PALM SIDE COMPLETE
36	KICK LEVER SPRING	77	HANDLE WASHER	131	GEAR SIDE COMPLETE
37	CAM PLATE	78	HANDLE ASSEMBLY	132	HANDLE COMPLETE
38	CAM PLATE SCREW	79	BALL BEARING	133	HOOK HOLDER
39	PINION YOKE	80	HANDLE KNOB	134	HOOK HOLDER WASHER(OPTIONAL)
40	PINION GEAR	81	BALL BEARING	135	HOOK HOLDER SCREW
41	PINION GEAR SPRING	82	HANDLE KNOB SCREW	136	HOOK HOLDER SPRING
42	RATCHET	83	HANDLE KNOB CAP		
43	RATCHET WASHER	84	HANDLE WASHER		



TOURNAMENT_{pro} SPEED SPOOL® LFS



TPG1HL

Speed Spool Bait Cast reels are designed to be *Lighter, Faster* and **Stronger**

Driven by innovation – Fueled with Passion

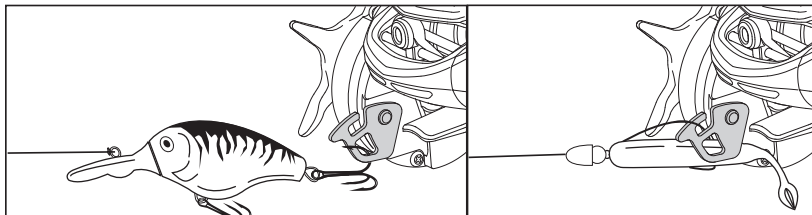
Feel the Difference!

TOURNAMENT_{pro} SPEED SPOOL® LFS

Reel Specifications

Model	Weight	Gear Ratio	Line Capacity	IPT
TPG1H	6.2 OZ.	6.8:1	120/12 LB.	28"
TPG1HL	6.2 OZ.	6.8:1	120/12 LB.	28"
TPG1SH	6.2 OZ.	7.5:1	120/12 LB.	31"
TPG1XH	6.2 OZ.	8.3:1	120/12 LB.	35"

Exclusive **SPEED KEEPER** Hook Keeper



Innovative Line Recognition Speed Dial

Your Speed Spool® reel features a convenient line indicator dial on the spool's tension knob. Quickly recognize what line type and line weight you have loaded on your reel.

FEATURES:

- Exclusive Speed Keeper Hook Keeper (pat. pend.)
- One-piece diecast aluminum frame
- Drilled and forged, anodized aluminum 16 hole U-spool
- Lightweight C40 carbon left and right sideplates
- SpeedCast® externally adjustable Centrifugal Brake System
- Rugged carbon composite drag system - provides up to 14 lbs. of drag power
- Ti coated zirconia line guide
- 95MM bowed carbon handle with duracork/EVA paddle shaped knobs
- External lube port

SPEED DIAL



11 Bearing System



Performance – *Right out of the Box!*

Our new Speed Spool LFS baitcast reel by Lew's® is designed for performance and functionality. From the way it conforms to your hand, to the way it reacts crisply and effortlessly to your command, you'll know the minute you grab onto the Speed Spool® that you've got a quality reel.

Your Speed Spool® reel exploits several new developments which will allow you to set yourself apart from the competition.

High Strength Aluminum Gearing

The drive gear, crankshaft, and worm shaft are made of high strength aluminum for increased strength and durability. In addition to these advantages, aluminum provides exceptionally low friction to enhance efficiency.

One-piece Die Cast Aluminum Frame

Your Speed Spool® reel utilizes a one-piece all aluminum frame. So you'll never have to worry about frame twisting or torquing.

Lightweight Machined Aluminum Spool

The spool on your Lew's® reel has been engineered to maximize casting distance. Anodized to withstand oxidation and abrasion, machined and built for deep capacity.

Machined Aluminum Spool

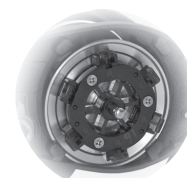


Zero-Reverse Anti-Reverse Bearing

The handle on your Speed Spool® reel will only rotate forward for rock solid hook setting. When you release the handle it will hold its position because of Anti-Reverse bearings, never losing an inch on your catch; an invaluable property to have when you're pulling it in.

Externally Adjustable Centrifugal Brake System

The SpeedCast® Adjustable Centrifugal Brake System delivers an extreme range of braking power from free spool to maximum by simply clicking its external dial to choose among 27 variable settings. The Tournament Pro Speed Spool puts you in control of your casts, perfectly aligning brake power to lure size. With this system you will have more casting control over light lures, while maximizing casting distance with all lures.



Cast Control System/Speed Dial

A second feature exists to prevent backlash, the Cast Control System. An adjustment knob is found next to the star drag. The function saddles the spool shaft with steady pressure in order to stabilize spool speed.

To calibrate the system reel your lure in until it rests on the tip of the rod, then tighten the knob until taut. Depress the thumb bar, and holding the rod horizontally loosen the knob slowly until the lure begins to descend. The spool should continue to spin after the lure contacts the ground, but should not complete more than one full rotation. If the spool does not continue to spin, the knob is too tight. If the spool completes more than one rotation, the knob is too loose. Repeat until you have achieved the desired results.

To set your Speed Dial, simply insert thumbnail or small coin in slot located in the center of the Speed Dial and turn the arrow marked M/B(mono or braid) of F (fluorocarbon) to the desired line rating number.

Bowed 95MM Carbon Fiber Handle

Our 95mm bowed carbon fiber handle will give you all the cranking power you need. The Lew's® custom paddle handle knobs are an added bonus and will provide comfortable fit and ease for all day fishing.



TOURNAMENT^{pro} SPEED SPOOL[®] LFS TPG1HL

Maintenance and Care

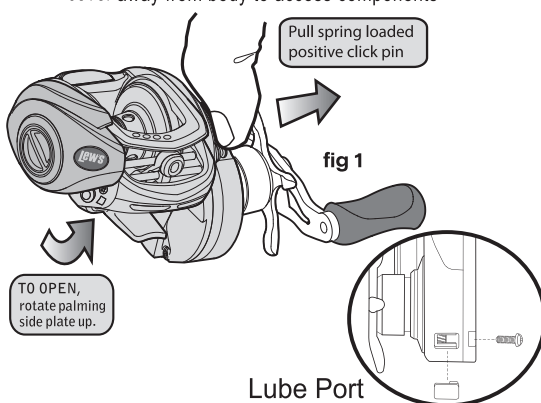
To remove the palming side plate, rotate palming side plate up while pulling the plunger located on the gear side-plate out.

When applying lubricant to your Speed Spool[®] reel, avoid using multi-purpose oil. Use lightweight oils or greases made for fishing reels. Apply oil to all bearings, the crank shaft, and the worm gear. Apply grease to the bushings, pinion gears, drive gears, and crank gears.

After usage your reel should be inspected for dirt or sand and cleaned if excessive buildup is present. If your reel has come in contact with saltwater it is important to flush all parts with water, dry and re-lubricate your reel.

Through diligent cleaning and maintenance your Lew's[®] reel will provide you with years of reliability and sound performance.

fig 1 To remove side cover pull side-plate click pin pry front cover away from body to access components

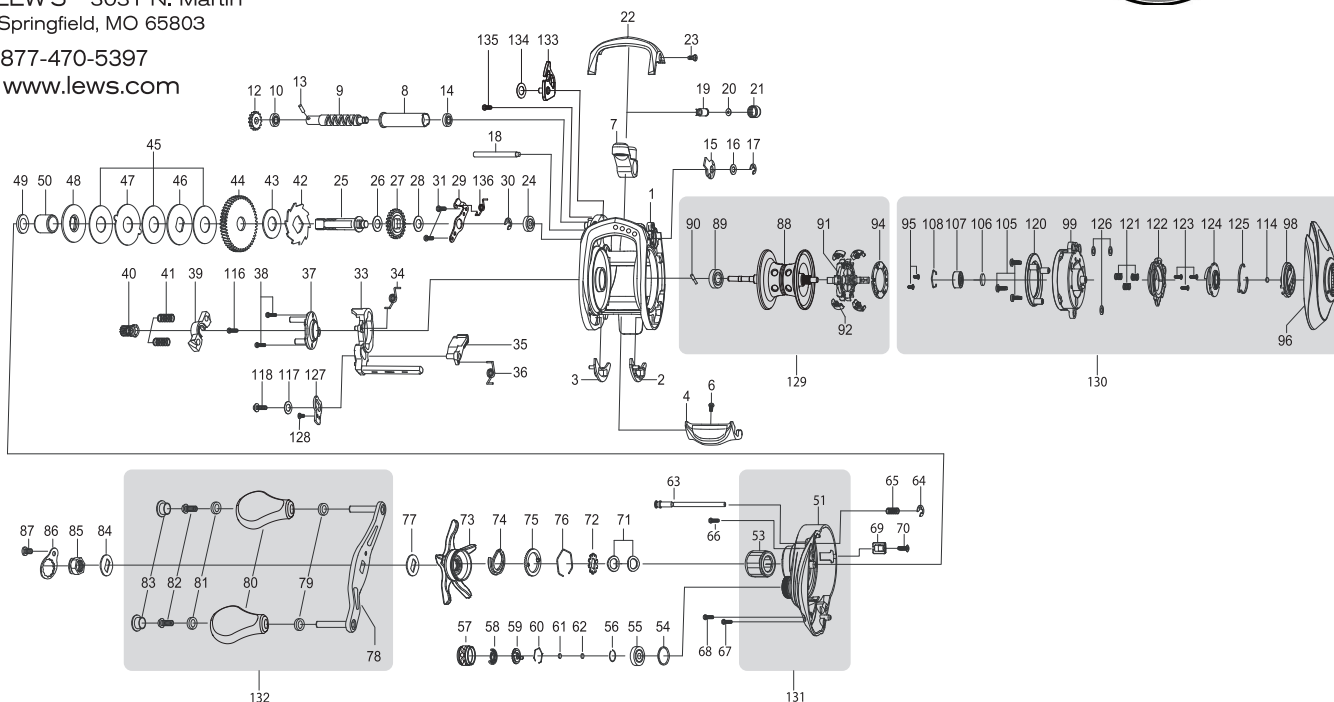


For professional cleaning and maintenance send your reel postage prepaid to:

LEW'S[®] 3031 N. Martin
Springfield, MO 65803

877-470-5397

www.lews.com



One Year Limited Warranty

Lew's[®] warrants its products¹ to withstand normal² use for the purpose designed and intended when manufactured for a period of one (1) year from the original retail sale date to the original retail consumer. Lew's will at its option repair or replace³ Lew's[®] products when required for the warranty period and return⁴ the product to the owner at no additional⁵ cost to the owner.

¹Numerous products have been manufactured under variations of the Lew's[®] name and under the Lew's[®] Logo by multiple businesses over the past 50 years. This warranty is specifically for products manufactured on behalf of Lew's[®] of Springfield, Missouri USA since January 1, 2010. Lew's[®] products manufactured by or on behalf of other entities prior to January 1, 2010 are not covered by this warranty. In all circumstances, this Warranty is Limited in Value to the original retail value of the product and is limited to actual damage to the Lew's[®] product and only the Lew's[®] product. ²Loss of a product, and loss/damage of a product or parts due to the attempted repair or servicing of a Lew's[®] product by any person or business other than Lew's[®] or Lew's[®] Authorized Warranty Service Agent, and damage caused by or resulting from abuse, misuse, lack of recommended maintenances, accident, acts of God, and shipping damages occurring in transit to Lew's[®] or Lew's[®] Authorized Agent are outside the scope of Lew's[®] Limited Warranty and will be repaired through Lew's[®] after warranty service at the expense of the consumer. ³Any products replaced by Lew's[®] will be new or remanufactured by a Lew's[®] Authorized Agent with same or next model upgrade product. ⁴Lew's[®] will return warranted products to the consumer by reasonable means as determined by Lew's[®]. ⁵Express or expedited services are the responsibility of the consumer as is sending the product to Lew's[®] Authorized Agent, for Warranty Service. Lew's[®] and Lew's[®] Service Agents as authorized by Lew's[®] are the sole agents authorized to repair or replace Lew's[®] products under the terms of this warranty. Only written changes by an officer of Lew's[®] can alter the terms or conditions of the warranty.

This warranty gives you specific legal rights including additional rights extended by some states which do not allow certain exclusions and limitations. Any action brought against Lew's[®] for the purpose of setting a warranty dispute shall be brought and litigated in the State of Missouri, County of Greene.

Lew's[®] 3031 N. Martin, Springfield, MO 65803 Phone : 1-417-881-LEWS(5397) FAX : 1-417-881-5387



Key#	Part Name	Key#	Part Name	Key#	Part Name
1	FRAME	44	DRIVE GEAR	85	HANDLE NUT
2	CLUTCH BAR PLATE-R	45	DRAG WASHER-L	86	HANDLE NUT RETAINER
3	CLUTCH BAR PLATE-L	46	DRAG WASHER-D1	87	SCREW
4	CLUTCH BAR	47	DRAG WASHER-A	88	SPOOL ASSEMBLY
6	CLUTCH BAR SCREW	48	DRAG WASHER-D2	89	BALL BEARING
7	LEVEL WIND ASSEMBLY	49	SLEEVE WASHER(OPTIONAL)	90	PIN
8	PIPE	50	SLEEVE	91	BRAKE HOLDER
9	WORM SHAFT	51	GEAR SIDE COVER ASSEMBLY	92	BRAKE SHOE
10	BALL BEARING	53	ONE WAY CLUTCH	94	BRAKE HOLDER PLATE
12	IDLER-S	54	O-RING	95	SCREW
13	WORM SHAFT PIN	55	BALL BEARING	96	PALM SIDE COVER ASSEMBLY
14	BALL BEARING	56	C-RING	98	CONTROL DIAL
15	WORM SHAFT BUSHING-B	57	CAST CONTROL CAP/SPEED DIAL	99	SPOOL COVER
16	WORM SHAFT WASHER	58	CLICKER	105	SPOOL COVER SCREW
17	E-RING	59	CLICK PLATE	106	SPOOL SPACER-A
18	PILLAR	60	CLICK PLATE RETAINER	107	BALL BEARING
19	LEVEL WIND PIN	61	TENSION WASHER	108	BEARING RETAINER
20	SPACER(OPTIONAL)	62	SPOOL SPACER-B	114	WASHER(OPTIONAL)
21	LEVEL WIND NUT	63	LOCKING PIN	116	CAM PLATE SCREW
22	FRONT COVER	64	E-RING	117	CLUTCH WASHER
23	FRONT COVER SCREW	65	LOCKING PIN SPRING	118	CLUTCH SCREW
24	BALL BEARING	66	GEAR SIDE COVER SCREW-A	120	BRAKE PLATE HOLDER ASSEMBLY
25	CRANK SHAFT	67	GEAR SIDE COVER SCREW-B	121	SLIDE CAM SPRING
26	IDLER-L WASHER-A	68	GEAR SIDE COVER SCREW-C	122	SLIDE CAM-H
27	IDLER-L	69	LUBE PORT CAP	123	SLIDE CAM SCREW
28	IDLER-L WASHER-B	70	LUBE PORT CAP SCREW	124	SLIDE CAM-D
29	BEARING PLATE	71	DRAG SPRING WASHER	125	CLICK SPRING
30	E-RING	72	CLICK HOLDER	126	SPOOL COVER SPACER(OPTIONAL)
31	BEARING PLATE SCREW	73	STAR DRAG	127	LINK PLATE
33	CLUTCH CAM	74	CLICKER	128	LINK PLATE SCREW
34	CLUTCH SPRING	75	CLICK PLATE	129	SPOOL COMPLETE
35	KICK LEVER	76	CLICK PLATE RETAINER	130	PALM SIDE COMPLETE
36	KICK LEVER SPRING	77	HANDLE WASHER	131	GEAR SIDE COMPLETE
37	CAM PLATE	78	HANDLE ASSEMBLY	132	HANDLE COMPLETE
38	CAM PLATE SCREW	79	BALL BEARING	133	HOOK HOLDER
39	PINION YOKE	80	HANDLE KNOB	134	HOOK HOLDER WASHER(OPTIONAL)
40	PINION GEAR	81	BALL BEARING	135	HOOK HOLDER SCREW
41	PINION YOKE SPRING	82	HANDLE KNOB SCREW	136	HOOK HOLDER SPRING
42	RATCHET	83	HANDLE KNOB CAP		
43	RATCHET WASHER	84	HANDLE WASHER		