



INSHORE SPEED SPOOL® LFS

SS11H, SS11SH



Speed Spool Bait Cast reels are designed to be **Lighter, Faster and Stronger**

Driven by innovation – Fueled with Passion
Feel the Difference!

INSHORE SPEED SPOOL® LFS

Reel Specifications

Model	Weight	Gear Ratio	Line Capacity	IPT
SS11H	7.2 OZ.	6.8:1	150/12 LB.	28"
SS11SH	7.2 OZ.	7.5:1	150/12 LB.	31"

FEATURES:

- One-piece, Lightweight Aluminum Frame
- Premium Double Shielded, Stainless Steel Bearings
- Magnetic Control System with External Click Dial to Adjust the Magnetic Brake System
- Stainless Steel Zero-Reverse One-way Clutch Bearing
- Deep Forged Aluminum U-shaped Spool
- Durable Carbon Drag System up to 14 lbs. Drag
- 95MM Bowed Aluminum Handle



Performance – Right out of the Box!

The Inshore Speed Spool LFS baitcast reel by Lew's® is designed for performance and functionality. From the way it conforms to your hand, to the way it reacts crisply and effortlessly to your command, you'll know the minute you grab onto the Inshore Speed Spool® that you've got a quality reel.

Your Speed Spool® reel exploits several new developments which will allow you to set yourself apart from the competition.


High Strength Brass Gearing

The drive gear, crankshaft, and worm shaft are made of high strength brass for increased strength and durability. In addition to these advantages, brass provides exceptionally low friction to enhance efficiency.

One-piece Die Cast Aluminum Frame

Your Speed Spool® reel utilizes a one-piece all aluminum frame. So you'll never have to worry about frame twisting or torquing.

Lightweight Machined Aluminum Spool

Machined Aluminum Spool 

The spool on your Lew's® reel has been engineered to maximize casting distance. Anodized to withstand oxidation and abrasion, machined and built for deep capacity.

Anti-Reverse Bearing

The handle on your Speed Spool® reel will only rotate forward for rock solid hook setting. When you release the handle it will hold its position because of Anti-Reverse bearings, never losing an inch on your catch; an invaluable property to have when you're pulling it in.



Full-Release Magnetic Control System

Magnetic Control System 

In order to combat backlash your Speed Spool® reel is furnished with an externally adjustable, full-release magnetic braking system. As the spool accelerates it experiences magnetic resistance, which can be controlled with a dial on the palming sideplate. A full-release magnetic brake has the ability to be backed for enough away from the spool to completely negate any effect on the acceleration of the spool.

Cast Control System

A second feature exists to prevent backlash, the Cast Control System. An adjustment knob is found next to the star drag. The function saddles the spool shaft with steady pressure in order to stabilize spool speed.

To calibrate the system reel your lure in until it rests on the tip of the rod, then tighten the knob until taut. Depress the thumb bar, and holding the rod horizontally loosen the knob slowly until the lure begins to descend. The spool should continue to spin after the lure contacts the ground, but should not complete more than one full rotation. If the spool does not continue to spin, the knob is too tight. If the spool completes more than one rotation, the knob is too loose. Repeat until you have achieved the desired results.

Bowed 85mm Aluminum Handle

Our 85mm bowed aluminum handle will give you all the cranking power you need. The Lew's® custom Soft Touch contoured paddle is an added bonus known for its comfortable fit and ease for all day fishing. The SSG1S model features a 95mm bowed aluminum handle.



INSHORE SPEED SPOOL® LFS

SS11SH

One Year Limited Warranty

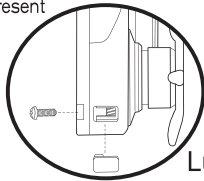
Maintenance and Care

To remove the palming side plate, rotate palming side plate up while pulling the plunger located on the gear side-plate out.

When applying lubricant to your Speed Spool® reel, avoid using multi-purpose oil. Use lightweight oils or greases made for fishing reels. Apply oil to all bearings, the crank shaft, and the worm gear. Apply grease to the bushings, pinion gears, drive gears, and crank gears.

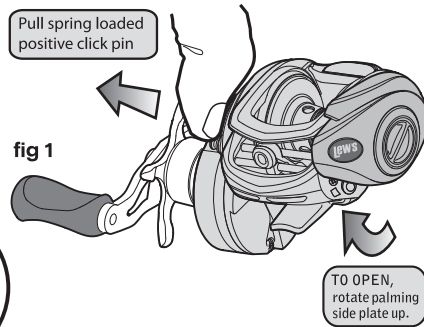
After usage your reel should be inspected for dirt or sand and cleaned if excessive buildup is present. If your reel has come in contact with saltwater it is important to flush all parts with water, dry and re-lubricate your reel.

Through diligent cleaning and maintenance your Lew's® reel will provide you with years of reliability and sound performance



Lube Port

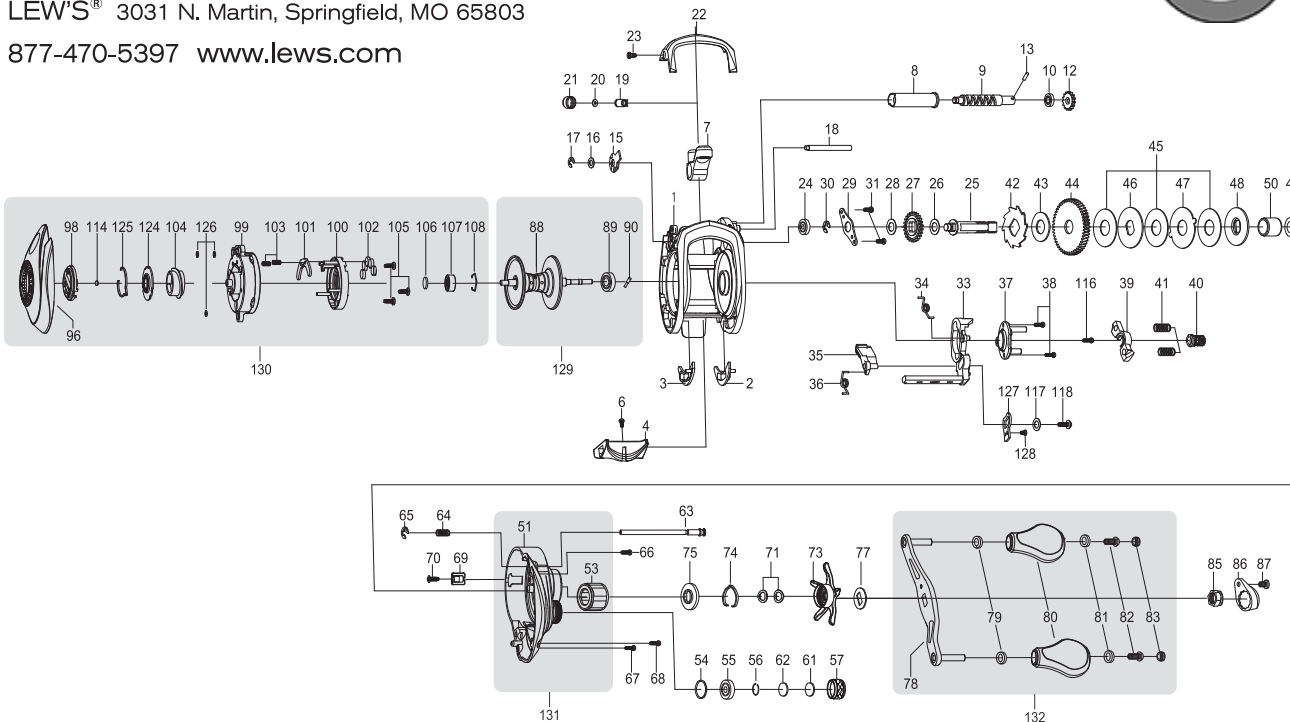
fig 1 To remove side cover pull side-plate click pin pry front cover away from body to access components



For professional cleaning and maintenance send your reel postage prepaid to:

LEW'S® 3031 N. Martin, Springfield, MO 65803

877-470-5397 www.lews.com



Lew's® Warrants its products¹ to withstand normal² use for the purpose designed and intended when manufactured for a period of one (1) year from the original retail sale date to the original retail consumer. Lew's will at its option repair or replace³ Lew's® products when required for the warranty period and return⁴ the product to the owner at no additional⁵ cost to the owner.

¹Numerous products have been manufactured under variations of the Lew's® name and under the Lew's® Logo by multiple businesses over the past 50 years. This warranty is specifically for products manufactured on behalf of Lew's® of Springfield, Missouri USA since January 1, 2010. Lew's® products manufactured by or on behalf of other entities prior to January 1, 2010 are not covered by this warranty. In all circumstances, this Warranty is Limited in Value to the original retail value of the product and is limited to actual damage to the Lew's® product and only the Lew's® product. ²Loss of a product, and loss/damage of a product or parts due to the attempted repair or servicing of a Lew's® product by any person or business other than Lew's® or Lew's® Authorized Warranty Service Agent, and damage caused by or resulting from abuse, misuse, lack of recommended maintenances, accident, acts of God, and shipping damages occurring in transit to Lew's® or Lew's® Authorized Agent are outside the scope of Lew's® Limited Warranty and will be repaired through Lew's® after warranty service at the expense of the consumer. ³Any products replaced by Lew's® will be new or remanufactured by a Lew's® Authorized Agent with same or next model upgrade product. ⁴Lew's® will return warranted products to the consumer by reasonable means as determined by Lew's®. ⁵Express or expedited services are the responsibility of the consumer as is sending the product to Lew's® Authorized Agent, for Warranty Service. Lew's® and Lew's® Service Agents as authorized by Lew's® are the sole agents authorized to repair or replace Lew's® products under the terms of this warranty. Only written changes by an officer of Lew's® can alter the terms or conditions of the warranty.

This warranty gives you specific legal rights including additional rights extended by some states which do not allow certain exclusions and limitations. Any action brought against Lew's® for the purpose of setting a warranty dispute shall be brought and litigated in the State of Missouri, County of Greene.

Key#	Part Name	Key#	Part Name	Key#	Part Name
1	FRAME	41	PINION YOKE SPRING	83	HANDLE KNOB CAP
2	CLUTCH BAR PLATE-R	42	RATCHET	85	HANDLE NUT
3	CLUTCH BAR PLATE-L	43	RATCHET WASHER	86	HANDLE NUT CAP
4	CLUTCH BAR	44	DRIVE GEAR	87	SCREW
6	CLUTCH BAR SCREW	45	DRAG WASHER-L	88	SPOOL ASSEMBLY
7	LEVEL WIND ASSEMBLY	46	DRAG WASHER-D1	89	BALL BEARING
8	PIPE	47	DRAG WASHER-A	90	PIN
9	WORM SHAFT	48	DRAG WASHER-D2	96	PALM SIDE COVER ASM.
10	BALL BEARING	49	SLEEVE WASHER(OPTIONAL)	98	CONTROL DIAL
12	IDLER-S	50	SLEEVE	99	SPOOL COVER
13	WORM SHAFT PIN	51	GEAR SIDE COVER ASM.	100	MAGNET HOLDER-F
15	WORM SHAFT BUSHING-B	53	ONE WAY CLUTCH	101	MAGNET HOLDER PLATE-F
16	WORM SHAFT WASHER	54	O-RING	102	MAGNET
17	E-RING	55	BALL BEARING	103	SPRING
18	PILLAR	56	C-RING	104	SLIDE CAM-F
19	LEVEL WIND PIN	57	CAST CONTROL CAP	105	SPOOL COVER SCREW
20	SPACER(OPTIONAL)	61	TENSION WASHER	106	SPOOL SPACER-A
21	LEVEL WIND NUT	62	SPOOL SPACER-B	107	BALL BEARING
22	FRONT COVER	63	LOCKING PIN	108	BEARING RETAINER
23	FRONT COVER SCREW	64	E-RING	114	WASHER(OPTIONAL)
24	BALL BEARING	65	LOCKING PIN SPRING	116	CAM PLATE SCREW
25	CRANK SHAFT	66	GEAR SIDE COVER SCREW-A	117	CLUTCH WASHER
26	IDLER-L WASHER-A	67	GEAR SIDE COVER SCREW-B	118	CLUTCH SCREW
27	IDLER-L	68	GEAR SIDE COVER SCREW-C	124	DIAL PLATE
28	IDLER-L WASHER-B	69	LUBE PORT CAP	125	CLICK SPRING
29	BEARING PLATE	70	LUBE PORT CAP SCREW	126	SPOOL COVER SPACER(OPTIONAL)
30	E-RING	71	DRAG SPRING WASHER	127	LINK PLATE
31	BEARING PLATE SCREW	73	STAR DRAG	128	LINK PLATE SCREW
33	CLUTCH CAM	74	CLICK LEAF SPRING	129	SPOOL COMPLETE
34	CLUTCH SPRING	75	CLICK PLATE-B	130	PALM SIDE COMPLETE
35	KICK LEVER	77	HANDLE WASHER	131	GEAR SIDE COMPLETE
36	KICK LEVER SPRING	78	HANDLE ASSEMBLY	132	HANDLE COMPLETE
37	CAM PLATE	79	BUSHING		
38	CAM PLATE SCREW	80	HANDLE KNOB		
39	PINION YOKE	81	BALL BEARING		
40	PINION GEAR	82	HANDLE KNOB SCREW		