

Lew's INSHORE SPEED SPOOL® LFS

SSN1SH

Driven by innovation –
Fueled with Passion
Feel the Difference!



Reel Specifications

Model	Weight (oz.)	Gear Ratio	Max Drag (lb.)	Line Capacity (yd./lb.)	RPT*
SSN1SH	7.2	7.5:1	20	140/12	31"

*Recovery per turn.

- One-piece aluminum frame
- Machine forged double anodized aluminum spool
- 7-bearing system with stainless steel double shielded ball bearings and Zero Reverse® one-way clutch bearing
- Externally adjustable Magnetic Control System (MCS)
- Bowed 95 mm aluminum with Lew's combat grip knobs
- High strength solid brass Speed Gears, cut on precision Hamai CNC gear hobbing machines
- P2 bearing supported pinion gear provides precise alignment and solid stability, resulting in a smoother operation and extended gear life

7 Bearing System

ATTENTION BRAIDED LINE USERS!

If your Lew's Baitcast reel has pre-drilled holes in the spool, you may tie your braid directly to the spool, by passing the braid thru the provided holes and tying a uni-knot.

If your Lew's baitcast reel does not have pre-drilled holes in the spool, you will need to first tie on and spool at least 20 revolutions of monofilament line, and then tie your braided line to the monofilament line, with either a back-to-back uni-knot or an Albright knot.

Continue to spool your reel as normal, keeping strong tension on the line to ensure the line is firmly wound onto the spool to keep from "digging in" to underlying line layers when pressure is put on the line from fighting fish.

FAILURE TO PROPERLY SPOOL BRAIDED LINE ONTO YOUR REELS SPOOL WILL RESULT IN LINE SLIPPAGE, AND THE IMPRESSION YOUR DRAG IS NOT WORKING PROPERLY.

Performance — Right out of the Box!

Speed Spool LFS Baitcast reels are designed to be Lighter, Faster, and Stronger. Your Speed Spool® LFS reel is designed to be Lighter, Faster and Stronger. From the way it conforms to your hand, to the way it reacts crisply and effortlessly to your command, you'll know the minute you grab onto your Speed Spool® LFS that you've got a quality reel. Your Speed Spool LFS reel exploits several new developments which will allow you to set yourself apart from the competition.



Speed Gears Lew's Speed Gears are cut on precision Hamai CNC gear hobbing machines resulting in an efficient drive train with less gear feel.



P2 Bearing

The P2 bearing supported pinion maintains precise alignment with the drive gear for improved gear lie. The result is smooth crank power even when under load. An added benefit is reduced friction with the spool shaft resulting in enhanced casting performance.

One-piece Aluminum Frame

Your Speed Spool® reel utilizes a one-piece all aluminum frame so that you'll never have to worry about frame torque or twisting.

Machine Forged Double Anodized Aluminum Spool

The machine forged double anodized aluminum spool of your Speed Spool reel is engineered for deep capacity and double anodized for superior oxidation and abrasion resistance.

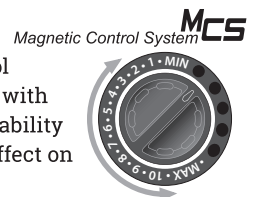
Zero Reverse Bearing

The handle on your Speed Spool® reel will only rotate forward for rock solid hook setting. When you release the handle, it will hold its position because of the Zero-Reverse bearing, never losing an inch on your catch; an invaluable property to have when you're pulling it in.



Full-Release Magnetic Control System (MCS)

In order to combat backlash your Speed Spool® reel is equipped with an externally adjustable, full-release magnetic braking system. As the spool accelerates it experiences magnetic resistance, which can be controlled with a dial on the palming sideplate. The full-release magnetic brake has the ability to be backed for enough away from the spool to completely negate any effect on the acceleration of the spool.



Cast Control System

A second feature exists to prevent backlash, the Cast Control System. An adjustment knob is found next to the star drag. This function saddles the spool shaft with steady pressure in order to stabilize spool speed.

To calibrate the system, reel your lure in until it rests on the tip of the rod, then tighten the knob until taut. Depress the thumb bar, and holding the rod horizontally loosen the knob slowly until the lure begins to descend. The spool should continue to spin after the lure contacts the ground, but should not complete more than one full rotation. If the spool does not continue to spin, the knob is too tight. If the spool completes more than one rotation, the knob is too loose. Repeat until you have achieved the desired results.

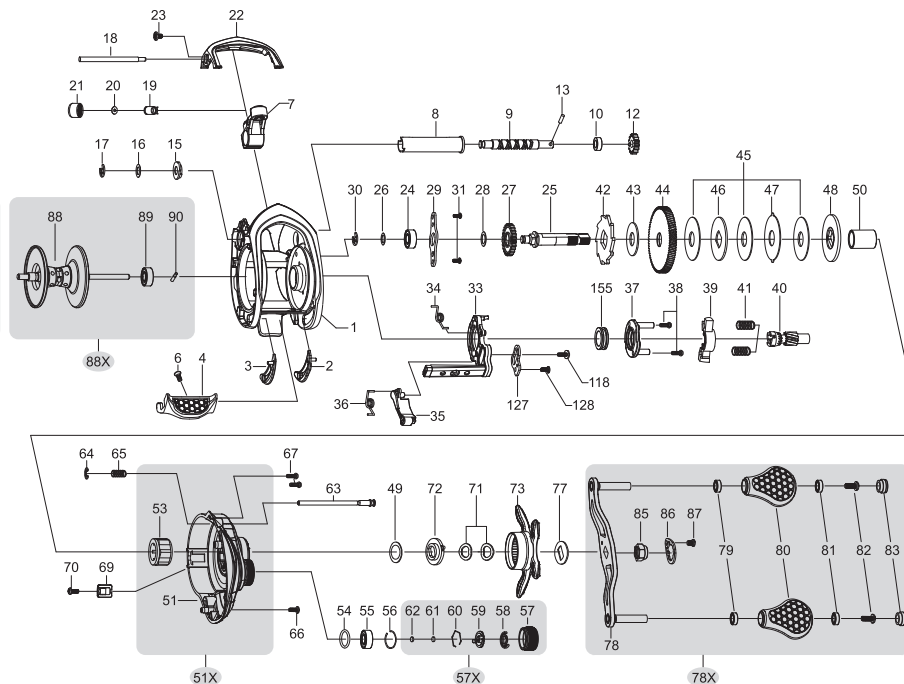
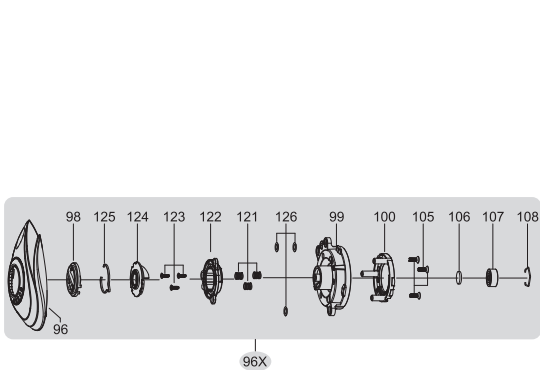
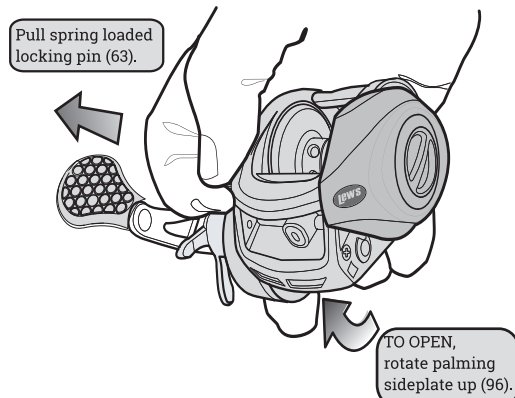
Bowed 95 mm Aluminum Handle

Our bowed 95 mm aluminum handle will give you all the cranking power you need. The Lew's® custom combat grip knobs are an added bonus known for a comfortable grip and ease for all day fishing.

Maintenance and Care

While applying lubricant to your Speed Spin® reel, avoid using multi-purpose oil. Use lightweight silicone based oils or greases made for fishing reels. Apply oil to all bearings and the main shaft. Apply grease to the bushings, pinion gears and main gears. After usage your reel should be inspected for dirt or sand and cleaned if excessive buildup is present. If your reel has come in contact with saltwater it is important to flush all parts with water, dry and re-lubricate your reel. Through diligent cleaning and maintenance your Lew's reel will provide you with years of reliability and sound performance.

fig 1 To remove palming sideplate pull locking pin (63) away from reel body.



One Year Limited Warranty For Warranty information and registration go to lews.com

Lew's warrants its products¹ to withstand normal² use for the purpose designed and intended when manufactured for a period of one (1) year from the original retail sale date to the original retail consumer. Lew's will at its option repair or replace³ Lew's products when required for the warranty period and return⁴ the product to the owner at no additional⁵ cost to the owner.

INumerous products have been manufactured under variations of the Lew's name and under the Lew's Logo by multiple businesses over the past 50 years. This warranty is specifically for products manufactured on behalf of Lew's of Springfield, Missouri, USA since January 1, 2010. Lew's products manufactured by or on behalf of other entities prior to January 1, 2010 are not covered by this warranty. In all circumstances, this Warranty is Limited in Value to the original retail value of the product and is limited to actual damage to the Lew's product and only the Lew's product. ²Loss of a product, and loss/damage of a product or parts due to the attempted repair or servicing of a Lew's product by any person or business other than Lew's or Lew's Authorized Warranty Service Agent, and damage caused by or resulting from abuse, misuse, lack of recommended maintenance, accident, acts of God, and shipping damages occurring in transit to Lew's or Lew's Authorized Agent are outside the scope of Lew's Limited Warranty and will be repaired through Lew's after warranty services at the expense of the consumer. ³Any products replaced by Lew's will be new or remanufactured by a Lew's Authorized Agent with the same or next model upgrade product. ⁴Lew's will return warranted products to the consumer by reasonable means as determined by Lew's. ⁵Express or expedited services are the responsibility of the consumer as is sending the product to Lew's or Lew's Authorized Agent, for Warranty Service. Lew's and Lew's Service Agents as authorized by Lew's are the sole agents authorized to repair or replace Lew's products under the terms of this warranty. Only written changes by an officer of Lew's can alter the terms or conditions of this warranty.

This warranty gives you specific legal rights including additional rights extended by some states which do not allow certain exclusions and limitations. Any action brought against Lew's for the purpose of settling a warranty dispute shall be brought and litigated in the State of Missouri, County of Greene.

KEY #	PART NAME	KEY #	PART NAME	KEY #	PART NAME
1	FRAME	39	PINION YOKE	73	STAR DRAG
2	CLUTCH BAR PLATE (R)	40	PINION GEAR	77	HANDLE WASHER
3	CLUTCH BAR PLATE (L)	41	PINION GEAR SPRING (2)	78	HANDLE
4	CLUTCH BAR ASSEMBLY	42	RATCHET	78X	HANDLE ASSEMBLY
6	CLUTCH BAR SCREW	43	RATCHET WASHER	79	BEARING
7	LEVELWIND ASSEMBLY	44	DRIVE GEAR	80	HANDLE KNOB (2)
8	PIPE	45	DRAG WASHER (L-3)	81	BALL BEARING (2)
9	WORM SHAFT	46	DRAG WASHER (D1)	82	HANDLE KNOB SCREW (2)
10	BUSHING	47	DRAG WASHER (A)	83	HANDLE KNOB CAP (2)
12	IDLER(S)	48	DRAG WASHER (D2)	85	HANDLE NUT
13	WORM SHAFT PIN	49	SLEEVE WASHER (OPTIONAL)	86	HANDLE NUT RETAINER
15	WORM SHAFT BUSHING (B)	50	SLEEVE	87	SCREW
16	WORM SHAFT WASHER (OPTIONAL)	51	GEAR SIDEPLATE	88	SPOOL
17	E-RING	51X	GEAR SIDEPLATE ASSEMBLY	88X	SPOOL ASSEMBLY
18	PILLAR	53	ONE-WAY CLUTCH BEARING	89	BALL BEARING
19	LEVEL WIND PIN	54	O-RING	90	PIN
20	SPACER (OPTIONAL)	55	BALL BEARING	96	PALMING SIDEPLATE
21	LEVEL WIND NUT	56	BEARING RETAINER	96X	PALMING SIDEPLATE ASSEMBLY
22	FRONT COVER	57	CAST CONTROL CAP	98	CONTROL DIAL
23	FRONT COVER SCREW (2)	57X	CAST CONTROL CAP ASSEMBLY	99	SPOOL COVER
24	BALL BEARING	58	CLICKER	100	MAGNET HOLDER ASSEMBLY
25	CRANKSHAFT	59	CLICK PLATE	105	SPOOL COVER SCREW (3)
26	IDLER (L) WASHER (A)	60	CLICK PLATE RETAINER	106	SPOOL SPACER-A
27	IDLER (L)	61	TENSION WASHER	107	BALL BEARING
28	IDLER(L) WASHER (B)	62	SPOOL SPACER (B)	108	BEARING RETAINER
29	BEARING PLATE	63	LOCKING PIN	118	CLUTCH SCREW
30	E-RING	64	E-RING	121	SLIDE CAM SPRING (3)
31	BEARING PLATE SCREW (2)	65	LOCKING PIN SPRING	122	SLIDE CAM (M)
33	CLUTCH CAM	66	GEAR SIDEPLATE COVER SCREW (A)	123	SLIDE CAM SCREW(3)
34	CLUTCH SPRING	67	GEAR SIDEPLATE SCREW (B 2)	124	DIAL CAM (M)
35	KICK LEVER	69	LUBE PORT CAP	125	CLICK SPRING
36	KICK LEVER SPRING	70	LUBE PORT CAP SCREW	126	SPOOL COVER SPACER (3)
37	CAM PLATE	71	DRAG SPRING WASHER (2)	127	LINK PLATE
38	CAM PLATE SCREW(2)	72	CLICK PLATE ASSEMBLY	126	LINK PLATE SCREW
				155	BUSHING

For professional cleaning and maintenance contact:
 Lew's Speed Services
 Phone: 417-522-1093
 FAX: 1-417-881-5387
service@lews.com



Lew's INSHORE SPEED SPOOL® LFS

SSN1SHL LEFT HAND



Driven by innovation –
Fueled with Passion
Feel the Difference!

Reel Specifications

Model	Weight (oz.)	Gear Ratio	Max Drag (lb.)	Line Capacity (yd./lb.)	RPT*
SSN1SHL	7.2	7.5:1	20	140/12	31"

*Recovery per turn.

- One-piece aluminum frame
- Machine forged double anodized aluminum spool
- 7-bearing system with stainless steel double shielded ball bearings and Zero Reverse® one-way clutch bearing
- Externally adjustable Magnetic Control System (MCS)
- Bowed 95 mm aluminum with Lew's combat grip knobs
- High strength solid brass Speed Gears, cut on precision Hamai CNC gear hobbing machines
- P2 bearing supported pinion gear provides precise alignment and solid stability, resulting in a smoother operation and extended gear life

7 Bearing System

ATTENTION BRAIDED LINE USERS!

If your Lew's Baitcast reel has pre-drilled holes in the spool, you may tie your braid directly to the spool, by passing the braid thru the provided holes and tying a uni-knot.

If your Lew's baitcast reel does not have pre-drilled holes in the spool, you will need to first tie on and spool at least 20 revolutions of monofilament line, and then tie your braided line to the monofilament line, with either a back-to-back uni-knot or an Albright knot.

Continue to spool your reel as normal, keeping strong tension on the line to ensure the line is firmly wound onto the spool to keep from "digging in" to underlying line layers when pressure is put on the line from fighting fish.

FAILURE TO PROPERLY SPOOL BRAIDED LINE ONTO YOUR REELS SPOOL WILL RESULT IN LINE SLIPPAGE, AND THE IMPRESSION YOUR DRAG IS NOT WORKING PROPERLY.

Performance — Right out of the Box!

Speed Spool LFS Baitcast reels are designed to be Lighter, Faster, and Stronger. Your Speed Spool® LFS reel is designed to be Lighter, Faster and Stronger. From the way it conforms to your hand, to the way it reacts crisply and effortlessly to your command, you'll know the minute you grab onto your Speed Spool® LFS that you've got a quality reel. Your Speed Spool LFS reel exploits several new developments which will allow you to set yourself apart from the competition.



Speed Gears Lew's Speed Gears are cut on precision Hamai CNC gear hobbing machines resulting in an efficient drive train with less gear feel.



P2 Bearing

The P2 bearing supported pinion maintains precise alignment with the drive gear for improved gear lie. The result is smooth crank power even when under load. An added benefit is reduced friction with the spool shaft resulting in enhanced casting performance.

One-piece Aluminum Frame

Your Speed Spool® reel utilizes a one-piece all aluminum frame so that you'll never have to worry about frame torque or twisting.

Machine Forged Double Anodized Aluminum Spool

The machine forged double anodized aluminum spool of your Speed Spool reel is engineered for deep capacity and double anodized for superior oxidation and abrasion resistance.

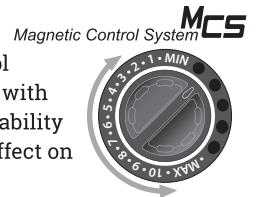
Zero Reverse Bearing

The handle on your Speed Spool® reel will only rotate forward for rock solid hook setting. When you release the handle, it will hold its position because of the Zero-Reverse bearing, never losing an inch on your catch; an invaluable property to have when you're pulling it in.



Full-Release Magnetic Control System (MCS)

In order to combat backlash your Speed Spool® reel is equipped with an externally adjustable, full-release magnetic braking system. As the spool accelerates it experiences magnetic resistance, which can be controlled with a dial on the palming sideplate. The full-release magnetic brake has the ability to be backed for enough away from the spool to completely negate any effect on the acceleration of the spool.



Cast Control System

A second feature exists to prevent backlash, the Cast Control System. An adjustment knob is found next to the star drag. This function saddles the spool shaft with steady pressure in order to stabilize spool speed.

To calibrate the system, reel your lure in until it rests on the tip of the rod, then tighten the knob until taut. Depress the thumb bar, and holding the rod horizontally loosen the knob slowly until the lure begins to descend. The spool should continue to spin after the lure contacts the ground, but should not complete more than one full rotation. If the spool does not continue to spin, the knob is too tight. If the spool completes more than one rotation, the knob is too loose. Repeat until you have achieved the desired results.

Bowed 95 mm Aluminum Handle

Our bowed 95 mm aluminum handle will give you all the cranking power you need. The Lew's® custom combat grip knobs are an added bonus known for a comfortable grip and ease for all day fishing.



INSHORE SPEED SPOOL® LFS SSN1SHL LEFT HAND

Maintenance and Care

While applying lubricant to your Speed Spin® reel, avoid using multi-purpose oil. Use lightweight silicone based oils or greases made for fishing reels. Apply oil to all bearings and the main shaft. Apply grease to the bushings, pinion gears and main gears. After usage your reel should be inspected for dirt or sand and cleaned if excessive buildup is present. If your reel has come in contact with saltwater it is important to flush all parts with water, dry and re-lubricate your reel. Through diligent cleaning and maintenance your Lew's reel will provide you with years of reliability and sound performance.

For professional cleaning and maintenance contact:
Lew's Speed Services
Phone: 417-522-1093
FAX: 1-417-881-5387
service@lews.com

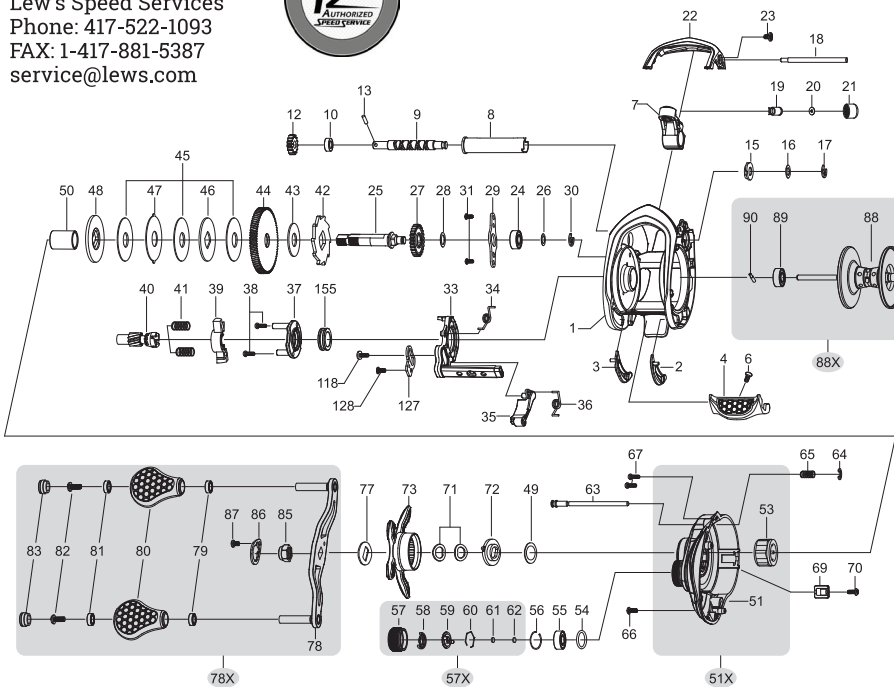
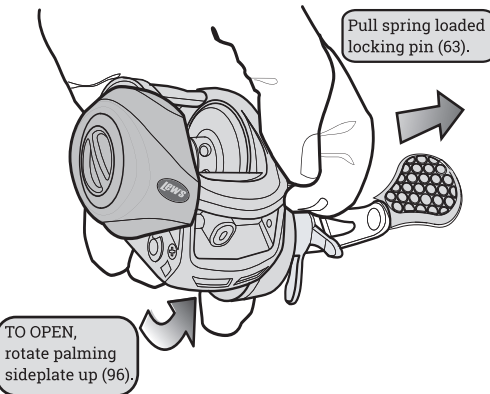


fig 1 To remove palming sideplate pull locking pin (63) away from reel body.



One Year Limited Warranty For Warranty information and registration go to lews.com

Lew's warrants its products¹ to withstand normal² use for the purpose designed and intended when manufactured for a period of one (1) year from the original retail sale date to the original retail consumer. Lew's will at its option repair or replace³ Lew's products when required for the warranty period and return⁴ the product to the owner at no additional⁵ cost to the owner.

INumerous products have been manufactured under variations of the Lew's name and under the Lew's Logo by multiple businesses over the past 50 years. This warranty is specifically for products manufactured on behalf of Lew's of Springfield, Missouri, USA since January 1, 2010. Lew's products manufactured by or on behalf of other entities prior to January 1, 2010 are not covered by this warranty. In all circumstances, this Warranty is Limited in Value to the original retail value of the product and is limited to actual damage to the Lew's product and only the Lew's product. ²Loss of a product, and loss/damage of a product or parts due to the attempted repair or servicing of a Lew's product by any person or business other than Lew's or Lew's Authorized Warranty Service Agent, and damage caused by or resulting from abuse, misuse, lack of recommended maintenance, accident, acts of God, and shipping damages occurring in transit to Lew's or Lew's Authorized Agent are outside the scope of Lew's Limited Warranty and will be repaired through Lew's after warranty services at the expense of the consumer. ³Any products replaced by Lew's will be new or remanufactured by a Lew's Authorized Agent with the same or next model upgrade product. ⁴Lew's will return warranted products to the consumer by reasonable means as determined by Lew's. ⁵Express or expedited services are the responsibility of the consumer as is sending the product to Lew's or Lew's Authorized Agent, for Warranty Service. Lew's and Lew's Service Agents as authorized by Lew's are the sole agents authorized to repair or replace Lew's products under the terms of this warranty. Only written changes by an officer of Lew's can alter the terms or conditions of this warranty.

This warranty gives you specific legal rights including additional rights extended by some states which do not allow certain exclusions and limitations. Any action brought against Lew's for the purpose of settling a warranty dispute shall be brought and litigated in the State of Missouri, County of Greene.

KEY #	PART NAME	KEY #	PART NAME	KEY #	PART NAME
1	FRAME	39	PINION YOKE	73	STAR DRAG
2	CLUTCH BAR PLATE (R)	40	PINION GEAR	77	HANDLE WASHER
3	CLUTCH BAR PLATE (L)	41	PINION GEAR SPRING (2)	78	HANDLE
4	CLUTCH BAR ASSEMBLY	42	RATCHET	78X	HANDLE ASSEMBLY
6	CLUTCH BAR SCREW	43	RATCHET WASHER	79	BEARING
7	LEVELWIND ASSEMBLY	44	DRIVE GEAR	80	HANDLE KNOB (2)
8	PIPE	45	DRAG WASHER (L-3)	81	BALL BEARING (2)
9	WORM SHAFT	46	DRAG WASHER (D1)	82	HANDLE KNOB SCREW (2)
10	BUSHING	47	DRAG WASHER (A)	83	HANDLE KNOB CAP (2)
12	IDLER(S)	48	DRAG WASHER (D2)	85	HANDLE NUT
13	WORM SHAFT PIN	49	SLEEVE WASHER (OPTIONAL)	86	HANDLE NUT RETAINER
15	WORM SHAFT BUSHING (B)	50	SLEEVE	87	SCREW
16	WORM SHAFT WASHER (OPTIONAL)	51	GEAR SIDEPLATE	88	SPOOL
17	E-RING	51X	GEAR SIDEPLATE ASSEMBLY	88X	SPOOL ASSEMBLY
18	PILLAR	53	ONE-WAY CLUTCH BEARING	89	BALL BEARING
19	LEVEL WIND PIN	54	O-RING	90	PIN
20	SPACER (OPTIONAL)	55	BALL BEARING	96	PALMING SIDEPLATE
21	LEVEL WIND NUT	56	BEARING RETAINER	96X	PALMING SIDEPLATE ASSEMBLY
22	FRONT COVER	57	CAST CONTROL CAP	98	CONTROL DIAL
23	FRONT COVER SCREW (2)	57X	CAST CONTROL CAP ASSEMBLY	99	SPOOL COVER
24	BALL BEARING	58	CLICKER	100	MAGNET HOLDER ASSEMBLY
25	CRANKSHAFT	59	CLICK PLATE	105	SPOOL COVER SCREW (3)
26	IDLER (L) WASHER (A)	60	CLICK PLATE RETAINER	106	SPOOL SPACER-A
27	IDLER (L)	61	TENSION WASHER	107	BALL BEARING
28	IDLER(L) WASHER (B)	62	SPOOL SPACER (B)	108	BEARING RETAINER
29	BEARING PLATE	63	LOCKING PIN	118	CLUTCH SCREW
30	E-RING	64	E-RING	121	SLIDE CAM SPRING (3)
31	BEARING PLATE SCREW (2)	65	LOCKING PIN SPRING	122	SLIDE CAM (M)
33	CLUTCH CAM	66	GEAR SIDEPLATE COVER SCREW (A)	123	SLIDE CAM SCREW(3)
34	CLUTCH SPRING	67	GEAR SIDEPLATE SCREW (B 2)	124	DIAL CAM (M)
35	KICK LEVER	69	LUBE PORT CAP	125	CLICK SPRING
36	KICK LEVER SPRING	70	LUBE PORT CAP SCREW	126	SPOOL COVER SPACER (3)
37	CAM PLATE	71	DRAG SPRING WASHER (2)	127	LINK COVER
38	CAM PLATE SCREW(2)	72	CLICK PLATE ASSEMBLY	126	LINK PLATE SCREW
				155	BUSHING

lews.com

H-18-1