



MACH[®] INSHORE
SPEED SPOOL[®] SLP



MI1SH

Speed Spool SLP Baitcast reels are designed to be **Super Low Profile.**

Driven by innovation — **Fueled with Passion**
Feel the Difference!

7 Bearing System

Reel Specifications

Model	Weight (oz.)	Gear Ratio	Line Capacity (yds./lbs.)	RPT* (in.)
MI1SH	7.1	7.5:1	140/12	30

*Recovery per turn.

FEATURES:

- One-piece lightweight SLP graphite frame and sideplates with 3 drain ports
- Stainless steel 7-bearing system includes Zero Reverse[®] one-way clutch bearing
- Double anodized, aluminum spool tension cap • Double anodized, aluminum drag star
- Multi-Setting Brake (MSB) system utilizes both magnetic and centrifugal braking to reduce backlash
- High strength solid brass Speed Gears, cut on precision Hamai CNC gear hobbing machines
- Smooth Carbon fiber drag system provides up to 20lbs.
- Speed Lube for exceptional smoothness and uninterrupted performance in all weather conditions from extreme heat to freezing cold
- Bowed 95 mm aluminum handle with Winn[®] Dri-Tac knobs

ATTENTION BRAIDED LINE USERS!

If your Lew's[®] Baitcast reel has pre-drilled holes in the spool, you may tie your braid directly to the spool, by passing the braid thru the provided holes and tying a uni-knot.

If your Lew's[®] baitcast reel does not have pre-drilled holes in the spool, you will need to first tie on and spool at least 20 revolutions of monofilament line, and then tie your braided line to the monofilament line, with either a back-to-back uni-knot or an Albright knot.

Continue to spool your reel as normal, keeping strong tension on the line to ensure the line is firmly wound onto the spool to keep from "digging in" to underlying line layers when pressure is put on the line from fighting fish.

FAILURE TO PROPERLY SPOOL BRAIDED LINE ONTO YOUR REELS SPOOL WILL RESULT IN LINE SLIPPAGE, AND THE IMPRESSION YOUR DRAG IS NOT WORKING PROPERLY.

Performance — Right out of the Box!

Your Speed Spool[®] SLP reel is designed for performance and functionality. From the way it conforms to your hand, to the way it reacts crisply and effortlessly to your command, you'll know the minute you grab onto your Speed Spool SLP that you've got a quality reel.

Your Speed Spool SLP reel exploits several new developments which will allow you to set yourself apart from the competition.



Speed Gears Lew's Speed Gears are cut on precision Hamai CNC gear hobbing machines resulting in an efficient drive train with less gear feel.

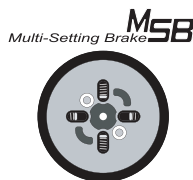
One-piece Graphite Frame and Sideplates Your Speed Spool[®] reel utilizes a one-piece, lightweight graphite frame and sideplates. Lightweight plus strong, so you'll never have to worry about frame torque or twisting.

Machine Forged Double Anodized Aluminum Spool The machine forged double anodized aluminum spool of your Speed Spool reel is engineered for deep capacity and double anodized for superior oxidation and abrasion resistance.



Zero Reverse Bearing The handle on your Speed Spool[®] reel will only rotate forward for rock solid hook setting. When you release the handle, it will hold its position

because of the Zero-Reverse bearing, never losing an inch on your catch; an invaluable property to have when you're pulling it in.



Multi-Setting Braking System (MSB) In order to combat backlash your Speed Spool[®] reel features both an externally-adjustable, full-release magnetic braking system as well as an internally adjustable centrifugal brake system. The magnetic brakes give consistent braking throughout the entire cast and are adjusted by the palming sideplate dial. The centrifugal brakes provide initial braking at the beginning of the cast to reduce backlash and can be turned off to reduce braking by removing the palming sideplate and pushing the white pin(s) towards the center of the spool until they click. To turn them back on push the white pin(s) away from the center of the spool until they click.

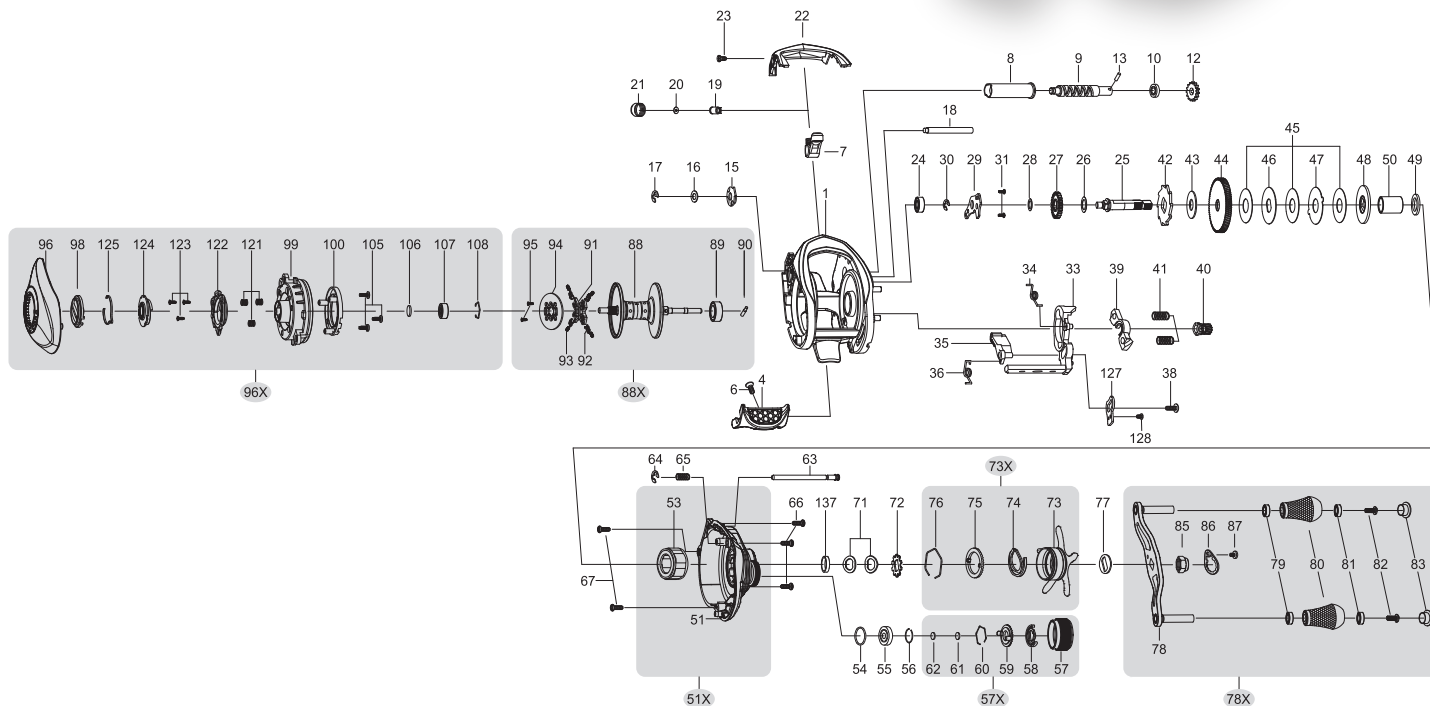
Cast Control System A second feature exists to prevent backlash, the Cast Control System. An adjustment knob is found next to the star drag. The function saddles the spool shaft with steady pressure in order to stabilize spool speed.

To calibrate the system, reel your lure in until it rests on the tip of the rod, then tighten the knob until taut. Depress the thumb bar, and holding the rod horizontally loosen the knob slowly until the lure begins to descend. The spool should continue to spin after the lure contacts the ground, but should not complete more than one full rotation. If the spool does not continue to spin, the knob is too tight.

If the spool completes more than one rotation, the knob is too loose. Repeat until you have achieved the desired results.



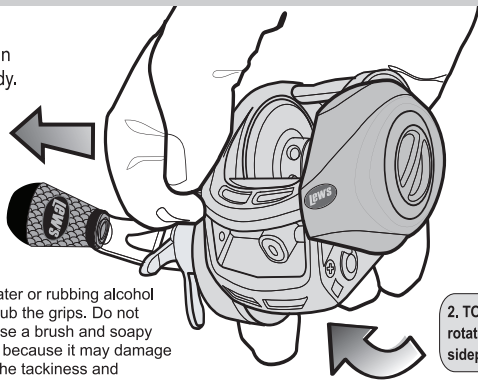
MACH[®] INSHORE SPEED SPOOL[®] SLP MI1SH



Maintenance and Care

To remove palming sideplate pull locking pin (63) away from reel body.

1. Pull and hold spring loaded locking pin(63).



2. TO OPEN, rotate palming sideplate up.

Winn[®] Grip Care

Apply a small amount of water or rubbing alcohol to a soft towel, and gently rub the grips. Do not saturate the towel. Never use a brush and soapy water to clean a Winn grip, because it may damage the top surface or destroy the tackiness and slip-resistance of the grip.

For professional cleaning and maintenance contact:
Lew's Speed Services
Phone: 417-522-1093
FAX: 1-417-881-5387
service@lews.com



One Year Limited Warranty
For warranty registration go to lews.com

KEY #	PART NAME	KEY #	PART NAME	KEY #	PART NAME
1	FRAME	42	RATCHET	79	BALL BEARING (*2)
4	CLUTCH BAR	43	RATCHET WASHER	80	HANDLE KNOB (*2)
6	CLUTCH BAR SCREW	44	DRIVE GEAR	81	BALL BEARING (*2)
7	LEVELWIND ASSEMBLY	45	DRAG WASHER (L*3)	82	HANDLE KNOB SCREW (*2)
8	PIPE	46	DRAG WASHER (D1)	83	HANDLE KNOB CAP (*2)
9	WORM SHAFT	47	DRAG WASHER (A)	85	HANDLE NUT
10	BALL BEARING	48	DRAG WASHER (D2)	86	HANDLE NUT RETAINER
12	IDLER(S)	49	SLEEVE WASHER (OPT)	87	HANDLE NUT RETAINER SCREW
13	WORM SHAFT PIN	50	SLEEVE	88	SPOOL
15	WORM SHAFT BUSHING (B)	51	GEAR SIDEPLATE	88X SPOOL ASSEMBLY	
16	WORM SHAFT WASHER (OPT)	51X GEAR SIDEPLATE ASSEMBLY		89	BALL BEARING
17	E-RING	53	ONE-WAY CLUTCH	90	PIN
18	PILLAR	54	O-RING	91	BRAKE HOLDER
19	LEVELWIND PIN	55	BALL BEARING	92	BRAKE SHOE (*4)
20	SPACER (OPTIONAL)	56	BEARING RETAINER	93	BRAKE SHOE SPRING (*4)
21	LEVELWIND NUT	57	CAST CONTROL CAP	94	BRAKE HOLDER PLATE
22	FRONT COVER	57X CAST CONTROL CAP ASS'Y		95	BRAKE HOLDER PLATE SCREW (*2)
23	FRONT COVER SCREW (A)	58	CLICKER	96	PALM SIDEPLATE
24	BALL BEARING	60	CLICKER PLATE RETAINER	96X PALM SIDEPLATE ASSEMBLY	
25	CRANKSHAFT	61	TENSION WASHER	98	CONTROL DIAL
26	IDLER-L WASHER(A)	62	SPOOL SPACER-B	99	SPOOL COVER
27	IDLER-L	63	LOCKING PIN	100	MAGNET HOLDER ASSEMBLY
28	IDLER-L WASH (B)	64	E-RING	105	SPOOL COVER SCREW (*3)
29	BEARING PLATE	65	LOCKING PIN SPRING	106	SPOOL SPACER (A)
30	E-RING	66	GEAR SIDEPLATE SCREW (A)	107	BALL BEARING
31	BEARING PLATE SCREW (*2)	67	GEAR SIDEPLATE SCREW (B)	108	BEARING RETAINER
33	CLUTCH CAM	71	DRAG SPRING WASHER (*2)	111	DRAG SPRING WASHER
34	CLUTCH SPRING	72	CLICK PLATE ASSEMBLY	121	SLIDE CAM SPRING (*3)
35	KICK LEVER	73	STAR DRAG	122	SLIDE CAM-H
36	KICK LEVER SPRING	73X STAR DRAG ASSEMBLY		123	SLIDE CAM SCREW (*3)
38	CLUTCH CAM SCREW (*2)	74	CLICKER	124	SLIDE CAM-D
39	PINION YOKE	76	CLICK PLATE RETAINER	125	CLICK SPRING
40	PINION GEAR	77	HANDLE WASHER	127	LINK PLATE
41	PINION YOKE SPRING (*2)	78	HANDLE	128	LINK PLATE SCREW
		78X HANDLE ASSEMBLY		137	DRAG SPACER