

# TOURNAMENT SK SPEED SPOOL®

TSK1SH



Speed Spool Bait Cast reels are designed to be **Lighter, Faster and Stronger**

*Driven by innovation – Fueled with Passion*  
**Feel the Difference!**

## TOURNAMENT SK SPEED SPOOL®

### Reel Specifications

Model	Weight	Gear Ratio	Line Capacity	IPT
TSK1SH	7.4 OZ.	7.1:1	150/12 LB.	31"
TSK1SHL	7.4 OZ.	7.1:1	150/12 LB.	31"

### FEATURES:

- One-piece, lightweight painted graphite frame and sideplates
- Ten premium double shielded, stainless steel bearings (9+1)
- Multi-setting Braking System
- Zero-Reverse one-way stainless steel clutch bearing
- Forged double anodized aluminum U style spool
- Durable Rulon drag system provides up to 10 lbs. drag
- 95MM bowed aluminum handle with Lew's® custom SoftTouch contoured paddle.

## Performance – Right out of the Box!

Our new Tournament SK baitcast reel by Lew's® is designed for performance and functionality. From the way it conforms to your hand, to the way it reacts crisply and effortlessly to your command, you'll know the minute you grab onto the Speed Spool® that you've got a quality reel.


### High Strength Brass Gearing

The drive gear, crankshaft, and worm shaft are made of high strength brass for increased strength and durability. In addition to these advantages, brass provides exceptionally low friction to enhance efficiency.

### One-piece Aluminum Frame

Your Speed Spool® reel utilizes a one-piece all aluminum frame. So you'll never have to worry about frame twisting and torquing.

### Lightweight Machined Aluminum Spool

*Machined Aluminum Spool* 

The spool on your Lew's® reel has been engineered to maximize casting distance. Anodized to withstand oxidation and abrasion, the lightweight machined aluminum spool with drilled holes to further reduce inertial mass will allow you to propel your lure farther than the competition – and you'll have a greater degree of control with less standing between you and the fish.

### Anti-reverse Bearing

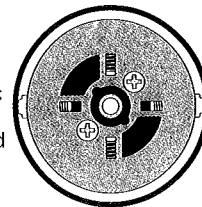
**10 Bearings System**

The handle on your Speed Spool® reel will only rotate forward for rock solid hook setting power. When you release the handle it will hold its position because of anti-reverse bearings, never losing an inch on your catch; an invaluable property to have when you're pulling it in.

### Multi-setting Braking System

*multi setting brake* **MSB**

In order to combat backlash after a cast your Speed Spool® reel is furnished with both a centrifugal brake system and an externally adjustable magnetic brake system. As the spool accelerates it experiences magnetic resistance as well as friction by four internal brake shoes which slide outwards when engaged. You can control the magnetic brake with a dial on the palming side-plate. To disengage individual brake shoes remove the palming side-plate. The four brake shoes are housed within a disk attached to the spool assembly. When disengaged the brake shoes remain stationary when the spool spins and do not inflict friction on the spool.



### Cast Control System

A second feature exists to prevent backlash, the Cast Control System. An adjustment knob is found next to the star drag. The function saddles the spool shaft with steady pressure in order to stabilize spool speed.

To calibrate the system reel your lure in until it rests on the tip of the rod, then tighten the knob until taut. Depress the thumb bar, and holding the rod horizontally loosen the knob slowly until the lure begins to descend. The spool should continue to spin after the lure contacts the ground, but should not complete more than one full rotation. If the spool does not continue to spin, the knob is too tight. If the spool completes more than one rotation, the knob is too loose. Repeat until you have achieved the desired results.

**Maintenance and Care**

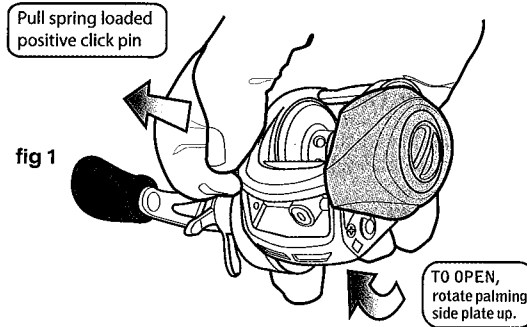
To remove the palming side plate, rotate palming side plate up while pulling the plunger located on the gear side-plate out.

When applying lubricant to your Speed Spool® reel, avoid using multi-purpose oil. Use lightweight oils or greases made for fishing reels. Apply oil to all bearings, the crank shaft, and the worm gear. Apply grease to the bushings, pinion gears, drive gears, and crank gears.

After usage your reel should be inspected for dirt or sand and cleaned if excessive buildup is present. If your reel has come in contact with saltwater it is important to flush all parts with water, dry and re-lubricate your reel.

Through diligent cleaning and maintenance your Lew's® reel will provide you with years of reliability and sound performance

**fig 1** To remove side cover pull side-plate click pin pry front cover away from body to access components



For professional cleaning and maintenance send your reel postage prepaid to:

LEW'S® 2253 E. Bennett St. Springfield, MO 65804

877-470-5397 www.lews.com

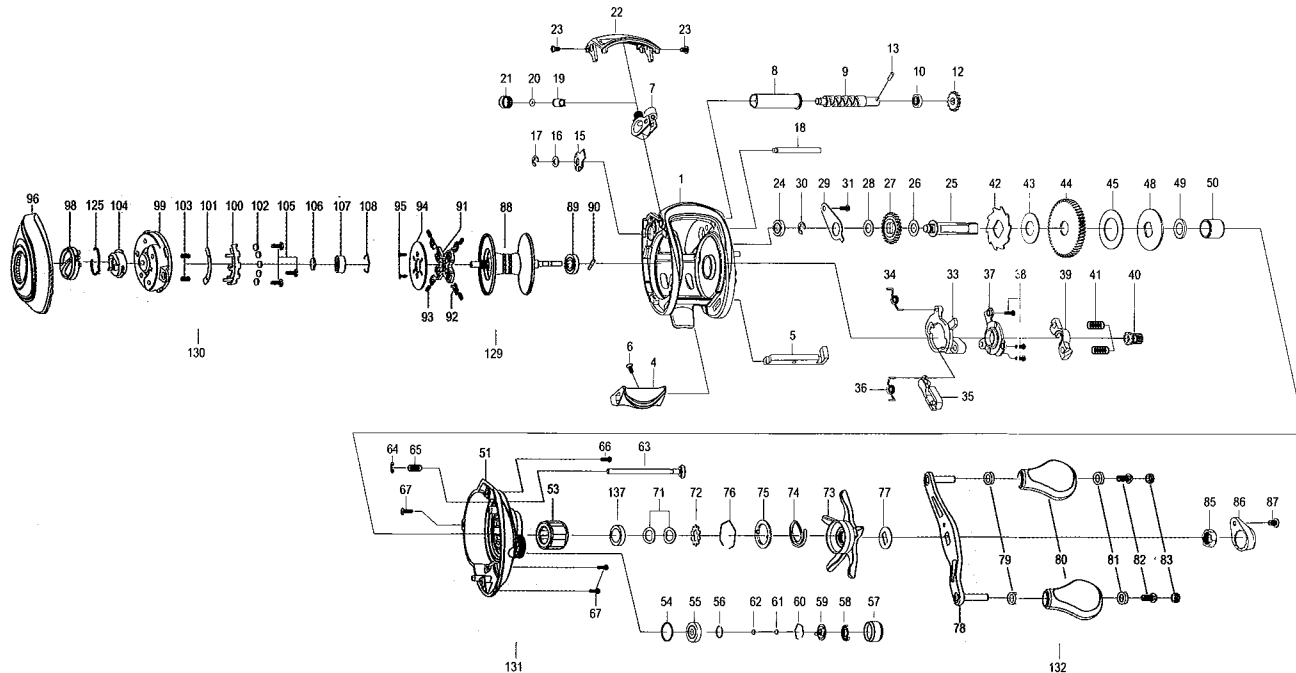


Lew's® warrants its products<sup>1</sup> to withstand normal<sup>2</sup> use for the purpose designed and intended when manufactured for a period of one (1) year from the original retail sale date to the original retail consumer. Lew's will at its option repair or replace<sup>3</sup> Lew's® products when required for the warranty period and return<sup>4</sup> the product to the owner at no additional<sup>5</sup> cost to the owner.

<sup>1</sup>Numerous products have been manufactured under variations of the Lew's® name and under the Lew's® Logo by multiple businesses over the past 50 years. This warranty is specifically for products manufactured on behalf of Lew's® of Springfield, Missouri USA since January 1, 2010. Lew's® products manufactured by or on behalf of other entities prior to January 1, 2010 are not covered by this warranty. In all circumstances, this Warranty is Limited in Value to the original retail value of the product and is limited to actual damage to the Lew's® product and only the Lew's® product. <sup>2</sup>Loss of a product, and loss/damage of a product or parts due to the attempted repair or servicing of a Lew's® product by any person or business other than Lew's® or Lew's® Authorized Warranty Service Agent, and damage caused by or resulting from abuse, misuse, lack of recommended maintenances, accident, acts of God, and shipping damages occurring in transit to Lew's® or Lew's® Authorized Agent are outside the scope of Lew's® Limited Warranty and will be repaired through Lew's® after warranty service at the expense of the consumer. <sup>3</sup>Any products replaced by Lew's® will be new or remanufactured by a Lew's® Authorized Agent with same or next model upgrade product. <sup>4</sup>Lew's® will return warranted products to the consumer by reasonable means as determined by Lew's®. <sup>5</sup>Express or expedited services are the responsibility of the consumer as is sending the product to Lew's® Authorized Agent, for Warranty Service. Lew's® and Lew's® Service Agents as authorized by Lew's® are the sole agents authorized to repair or replace Lew's® products under the terms of this warranty. Only written changes by an officer of Lew's® can alter the terms or conditions of the warranty.

This warranty gives you specific legal rights including additional rights extended by some states which do not allow certain exclusions and limitations. Any action brought against Lew's® for the purpose of setting a warranty dispute shall be brought and litigated in the State of Missouri, County of Greene.

Lew's® 2253 E Bennett, Springfield, MO 65804 Phone : 1-417-881-LEWS(5397) FAX : 1-417-881-5387



Key#	Part Name	Key#	Part Name	Key#	Part Name
1	FRAME	40	PINION GEAR	80	HANDLE KNOB
4	CLUTCH BAR	41	PINION YOKE SPRING	81	BALL BEARING
5	CLUTCH LINK	42	RATCHET	82	HANDLE KNOB SCREW
6	CLUTCH BAR SCREW	43	RATCHET WASHER	83	HANDLE KNOB CAP
7	LEVEL WIND ASSEMBLY	44	DRIVE GEAR	85	HANDLE NUT
8	PIPE	45	DRAG WASHER-L	86	HANDLE NUT CAP
9	WORM SHAFT	48	DRAG WASHER-D	87	SCREW
10	BALL BEARING	49	SLEEVE WASHER(OPTIONAL)	88	SPOOL ASSEMBLY
12	IDLER-S	50	SLEEVE	89	BALL BEARING
13	WORM SHAFT PIN	51	GEAR SIDE COVER	90	PIN
15	WORM SHAFT BUSHING-B	53	ONE WAY CLUTCH	91	BRAKE HOLDER
16	WORM SHAFT WASHER	54	O-RING	92	BRAKE SHOE
17	E-RING	55	BALL BEARING	93	BRAKE SHOE SPRING
18	PILLAR	56	C-RING	94	MAGNET PLATE
19	LEVEL WIND PIN	57	CAST CONTROL CAP	95	SCREW
20	SPACER(OPTIONAL)	58	CLICKER	96	PALM SIDE COVER
21	LEVEL WIND NUT	59	CLICK PLATE	98	CONTROL DIAL
22	FRONT COVER	60	CLICK PLATE RETAINER	99	SPOOL COVER ASSEMBLY
23	FRONT COVER SCREW	61	TENSION WASHER	100	MAGNET HOLDER
24	BALL BEARING	62	SPOOL SPACER-B	101	MAGNET HOLDER PLATE
25	CRANK SHAFT	63	LOCKING PIN	102	MAGNET
26	IDLER-L WASHER-A	64	E-RING	103	SPRING
27	IDLER-L	65	LOCKING PIN SPRING	104	SLIDE CAM
28	IDLER-L WASHER-B	66	GEAR SIDE COVER SCREW-A	105	SPOOL COVER SCREW
29	BEARING PLATE	67	GEAR SIDE COVER SCREW-B	106	SPOOL SPACER-A
30	E-RING	71	DRAG SPRING WASHER	107	BALL BEARING
31	BEARING PLATE SCREW	72	CLICK HOLDER	108	BEARING RETAINER
33	CLUTCH CAM	73	STAR DRAG ASSEMBLY	125	CLICK SPRING
34	CLUTCH SPRING	74	CLICKER	129	SPOOL COMPLETE
35	KICK LEVER	75	CLICK PLATE	130	PALM SIDE COMPLETE
36	KICK LEVER SPRING	76	CLICK PLATE RETAINER	131	GEAR SIDE COMPLETE
37	CAM PLATE	77	HANDLE WASHER	132	HANDLE COMPLETE
38	CAM PLATE SCREW	78	HANDLE ASSEMBLY	137	DRAG SPACER
39	PINION YOKE	79	BALL BEARING		