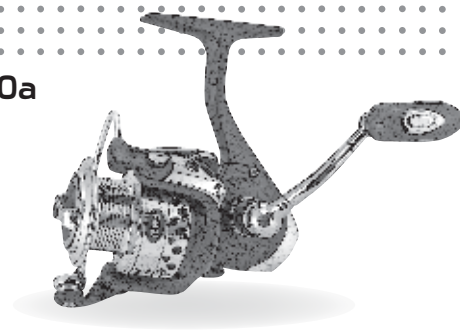




SS100a, SS200a, SS300a, SS400a



Speed Spool Bait Cast reels are designed to be Lighter, *Faster* and **Stronger**

*Driven by innovation – Fueled with Passion*  
**Feel the Difference!**



### Reel Specifications

Model	Weight oz.	Gear Ratio	Line Capacity	IPT
SS100a	7.0	5.2:1	130yds./6lb.	24"
SS200a	9.3	5.2:1	140yds./8lb.	26"
SS300a	9.8	5.2:1	180yds./10lb.	31"
SS400a	9.8	5.2:1	180yds./12lb.	31"

### FEATURES:

- Rugged graphite body, rotor and sidecover with slip resistant Soft Touch finish
- Forged shallow aluminum spool for braid.
- Precision cut solid brass gear 5.2:1 ratio
- Zero-Reverse one-way clutch bearing
- Heavy duty aluminum bail wire
- Reduced twist oversized line roller
- Quality brass pinion gear
- Machined aluminum handle
- Right left hand retrieve



### Maintenance and Care

While applying lubricant to your Speed Spin® reel, avoid using multi-purpose oil. Use lightweight silicone based oils or greases made for fishing reels. Apply oil to all bearings, the crank shaft, and the worm gear. Apply grease to the bushings, pinion gears, drive gears, and crank gears. **fig 1**

After usage your reel should be inspected for dirt or sand and cleaned if excessive buildup is present. If your reel has come in contact with saltwater it is important to flush all parts with water, dry and re-lubricate your reel. Through diligent cleaning and maintenance your Lew's® reel will provide you with years of reliability and sound performance.

For professional cleaning and maintenance send your reel postage prepaid to:

LEW'S® 3031 N. Martin  
 Springfield, MO 65803  
 877-470-5397  
 lews.com

### One Year Limited Warranty

Lew's® Warrants its products<sup>1</sup> to withstand normal<sup>2</sup> use for the purpose designed and intended when manufactured for a period of one (1) year from the original retail sale date to the original retail consumer. Lew's® will at its option repair or replace<sup>3</sup> Lew's® products when required for the warranty period and return<sup>4</sup> the product to the owner at no additional<sup>5</sup> cost to the owner.

<sup>1</sup>Numerous products have been manufactured under variations of the Lew's® name and under the Lew's® Logo by multiple businesses over the past 50 years. This warranty is specifically for products manufactured on behalf of Lew's® of Springfield, Missouri USA since January 1, 2010. Lew's® products manufactured by or on behalf of other entities prior to January 1, 2010 are not covered by this warranty. In all circumstances, this Warranty is Limited in Value to the original retail value of the product and is limited to actual damage to the Lew's® product and only the Lew's® product. <sup>2</sup>Loss of a product, and loss/damage of a product or parts due to the attempted repair or servicing of a Lew's® product by any person or business other than Lew's® or Lew's® Authorized Warranty Service Agent, and damage caused by or resulting from abuse, misuse, lack of recommended maintenance, accident, acts of God, and shipping damages occurring in transit to Lew's® or Lew's® Authorized Agent are outside the scope of Lew's® Limited Warranty and will be repaired through Lew's® after warranty services at the expense of the consumer. <sup>3</sup>Any products replaced by Lew's® will be new or remanufactured by a Lew's® Authorized Agent with the same or next model upgrade product. <sup>4</sup>Lew's® will return warranted products to the consumer by reasonable means as determined by Lew's®. <sup>5</sup>Express or expedited services are the responsibility of the consumer as is sending the product to Lew's® or Lew's® Authorized Agent, for Warranty Service. Lew's® and Lew's® Service Agents as authorized by Lew's® are the sole agents authorized to repair or replace Lew's® products under the terms of this warranty. Only written changes by an officer of Lew's® can alter the terms or conditions of this warranty.

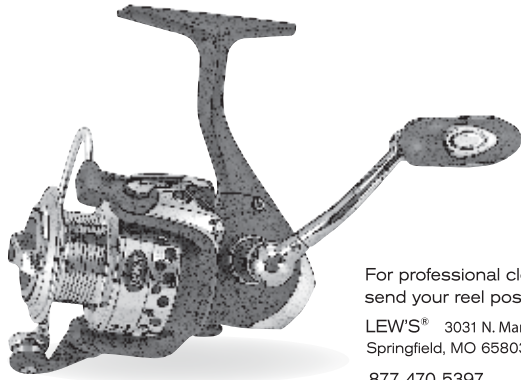
This warranty gives you specific legal rights including additional rights extended by some states which do not allow certain exclusions and limitations. Any action brought against Lew's® for the purpose of settling a warranty dispute shall be brought and litigated in the State of Missouri, County of Greene.

Lew's® 2253 E Bennett, Springfield, MO 65804 Phone 1-417-881-LEWS (5397) FAX: 1-417-881-5387

# LEW'S® SPEED SPIN®

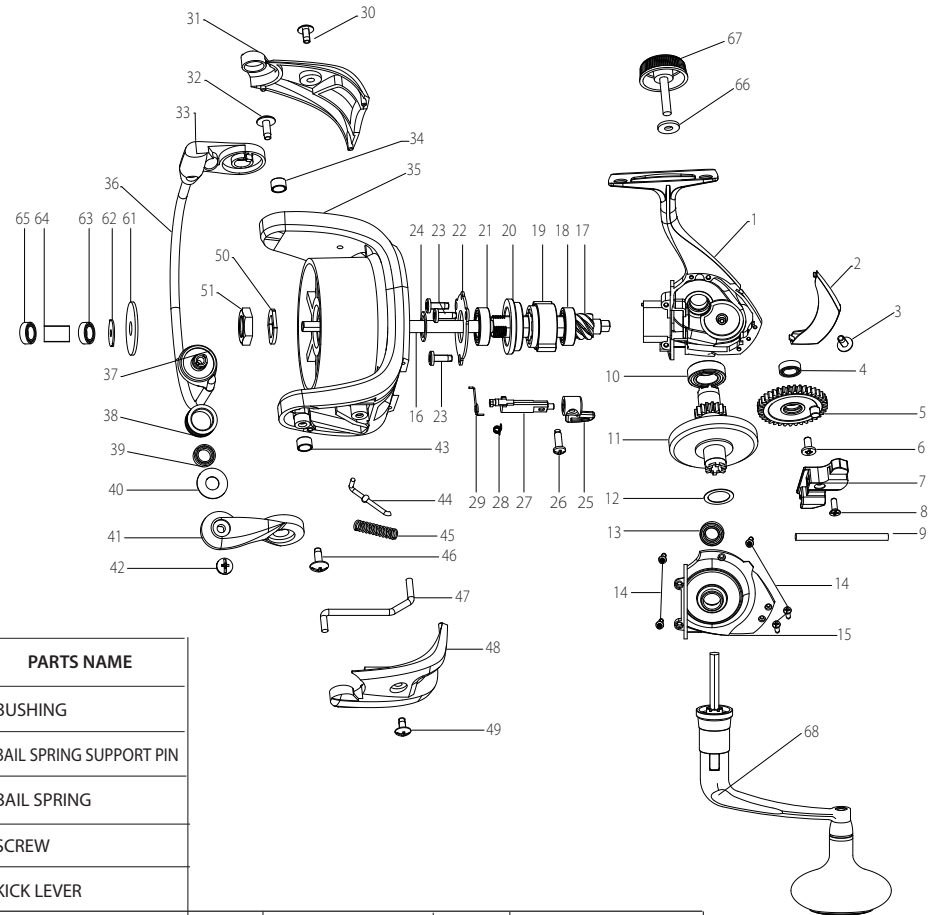
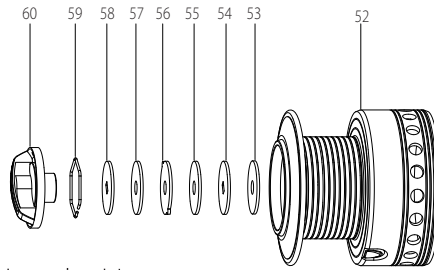
SS100a, SS200a, SS300a, SS400a

fig 1 To remove side cover unscrew side-plate screws pry front cover away from body to access components



For professional cleaning and maintenance send your reel postage prepaid to:

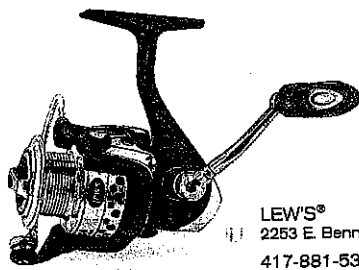
LEW'S® 3031 N. Martin  
Springfield, MO 65803  
877-470-5397  
lews.com



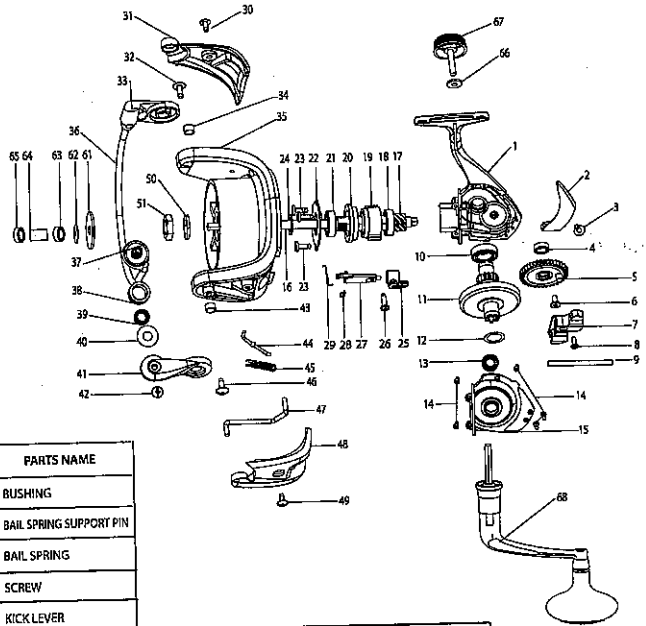
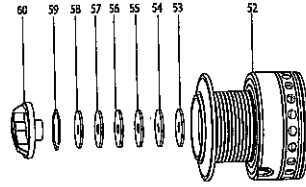
KEY NO.	PARTS NAME	KEY NO.	PARTS NAME	KEY NO.	PARTS NAME	KEY NO.	PARTS NAME	KEY NO.	PARTS NAME	KEY NO.	PARTS NAME
1	BODY	15	BODY SIDE COVER	29	SPRING	43	BUSHING				
2	REAR BODY COVER	16	MAIN SHAFT	30	SCREW	44	BAIL SPRING SUPPORT PIN				
3	SCREW	17	PINION GEAR	31	BAIL HOLDER COVER	45	BAIL SPRING				
4	BALL BEARING	18	BALL BEARING	32	SCREW	46	SCREW				
5	OSCILLATION GEAR	19	ONE WAY CLUTCH	33	BAIL HOLDER	47	KICK LEVER				
6	SCREW	20	BUSHING HOLDER	34	BUSHING	48	BAIL ARM COVER	56	DRAG WASHER	63	BALL BEARING
7	SLIDE	21	BUSHING	35	ROTOR	49	SCREW	57	LINE WASHER	64	BUSHING
8	SCREW	22	ONE WAY CLUTCH LOCK PLATE	36	BAIL ASSEMBLY	50	WASHER	58	DRAG WASHER	65	BALL BEARING
9	SLIDE PIN	23	SCREW (3)	37	SCREW	51	ROTOR NUT	59	SPRING	66	WASHER
10	BALL BEARING	24	WASHER	38	LINE ROLLER	52	SPOOL ASSEMBLY	60	DRAG KNOB	67	HANDLE CAP
11	DRIVE GEAR	25	ANTI-REVERSE SWITCH	39	BALL BEARING	53	LINE WASHER	61	CLICK GEAR	68	HANDLE ASSEMBLY
12	WASHER	26	SCREW	40	WASHER	54	DRAG WASHER	62	WASHER		
13	BALL BEARING	27	ANTI-REVERSE ARM	41	BAIL ARM	55	LINE WASHER				
14	SCREW (5)	28	SPRING	42	SCREW						

# LEWIS SPEED SPIN<sup>®</sup> SS450a

fig 1 To remove slide cover unscrew slide-plate screws pry front cover away from body to access components



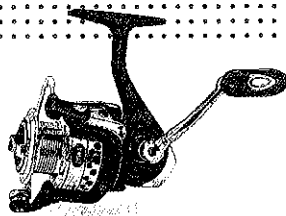
LEW'S<sup>®</sup>  
2253 E. Bennett St. Springfield, MO 65804  
417-881-5397 www.lews.com



KEY NO.	PARTS NAME	KEY NO.	PARTS NAME	KEY NO.	PARTS NAME	KEY NO.	PARTS NAME
1	BODY	15	BODY SIDE COVER	29	SPRING	43	BUSHING
2	REAR BODY COVER	16	MAIN SHAFT	30	SCREW	44	BAIL SPRING SUPPORT PIN
3	SCREW	17	PINION GEAR	31	BAIL HOLDER COVER	45	BAIL SPRING
4	BALL BEARING	18	BALL BEARING	32	SCREW	46	SCREW
5	OSCILLATION GEAR	19	ONE WAY CLUTCH	33	BAIL HOLDER	47	KICK LEVER
6	SCREW	20	BUSHING HOLDER	34	BUSHING	48	BAIL ARM COVER
7	SLIDE	21	BUSHING	35	ROTOR	49	SCREW
8	SCREW	22	ONE WAY CLUTCH LOCK PLATE	36	BAIL ASSEMBLY	50	WASHER
9	SLIDE PIN	23	SCREW (3)	37	SCREW	51	ROTOR NUT
10	BALL BEARING	24	WASHER	38	LINE ROLLER	52	SPOOL ASSEMBLY
11	DRIVE GEAR	25	ANTI-REVERSE SWITCH	39	BALL BEARING	53	LINE WASHER
12	WASHER	26	SCREW	40	WASHER	54	DRAG WASHER
13	BALL BEARING	27	ANTI-REVERSE ARM	41	BAIL ARM	55	LINE WASHER
14	SCREW (5)	28	SPRING	42	SCREW	56	DRAG WASHER
						57	LINE WASHER
						58	DRAG WASHER
						59	SPRING
						60	DRAG KNOB
						61	CLICK GEAR
						62	WASHER
						63	BALL BEARING
						64	BUSHING
						65	BALL BEARING
						66	WASHER
						67	HANDLE CAP
						68	HANDLE ASSEMBLY

# LEW'S SPEED SPIN<sup>®</sup>

## SS450a



Speed Spin Spinning Reels are designed to be **Lighter, Faster and Stronger**  
Driven by innovation – Fueled with Passion  
Feel the Difference!

### SPEED SPIN<sup>®</sup> SS450a

#### Reel Specifications

Model	Weight oz.	Gear Ratio	Line Capacity	IPT
SS100a	7.0	5.2:1	130yds./6lb.	24"
SS200a	9.3	5.2:1	140yds./8lb.	26"
SS300a	9.8	5.2:1	180yds./10lb.	31"
SS400a	9.8	5.2:1	180yds./12lb.	31"
SS450a	13.2	5.5:1	215yds./14lb.	32"

#### FEATURES:

- Rugged graphite body, rotor and sidecover with slip resistant Soft Touch finish
- Forged shallow aluminum spool for braid.
- Precision cut solid brass gear 5.5:1 ratio
- Zero-Reverse one-way clutch bearing
- Heavy duty aluminum bail wire
- Reduced twist oversized line roller
- Quality brass pinion gear
- Machined aluminum handle
- Right left hand retrieve

### SPEED SPIN<sup>®</sup> SS450a

#### Maintenance and Care

While applying lubricant to your Speed Spin<sup>®</sup> reel, avoid using multi-purpose oil. Use lightweight silicone based oils or greases made for fishing reels. Apply oil to all bearings, the main shaft and external moving parts. Apply grease to the bushings, main gear, pinion gear and oscillation gear

After usage your reel should be inspected for dirt or sand and cleaned if excessive buildup is present. If your reel has come in contact with saltwater it is important to flush all parts with water, dry and re-lubricate your reel. Through diligent cleaning and maintenance your Lew's<sup>®</sup> reel will provide you with years of reliability and sound performance.

For professional cleaning and maintenance send your reel postage prepaid to:

LEW'S<sup>®</sup> 2253 E. Bennett St. Springfield, MO 65804

417-881-5397 www.lews.com

#### One Year Limited Warranty

Lew's<sup>®</sup> warrants its products to withstand normal use for the purpose designed and intended when manufactured for a period of one (1) year from the original retail sale date to the original retail consumer. Lew's<sup>®</sup> will at its option repair or replace Lew's<sup>®</sup> products when required for the warranty period and return the product to the owner at no additional cost to the owner.

Numerous products have been manufactured under variations of the Lew's<sup>®</sup> name and under the Lew's<sup>®</sup> Logo by multiple businesses over the past 50 years. This warranty is specifically for products manufactured on behalf of Lew's<sup>®</sup> of Springfield, Missouri USA since January 1, 2010. Lew's<sup>®</sup> products manufactured by or on behalf of other entities prior to January 1, 2010 are not covered by this warranty. In all circumstances, this Warranty is limited in value to the original retail value of the product and is limited to actual damage to the Lew's<sup>®</sup> product and only the Lew's<sup>®</sup> product. Loss of a product, and loss/damage of a product or parts due to the attempted repair or servicing of a Lew's<sup>®</sup> product by any person or business other than Lew's<sup>®</sup> or Lew's<sup>®</sup> Authorized Warranty Service Agent, and damage caused by or resulting from abuse, misuse, lack of recommended maintenance, accident, acts of God, and shipping damages occurring in transit to Lew's<sup>®</sup> or Lew's<sup>®</sup> Authorized Agent are outside the scope of Lew's<sup>®</sup> Limited Warranty and will be repaired through Lew's<sup>®</sup> after warranty services at the expense of the consumer. Any products replaced by Lew's<sup>®</sup> will be new or remanufactured by a Lew's<sup>®</sup> Authorized Agent with the same or next model upgrade product. Lew's<sup>®</sup> will return warranted products to the consumer by reasonable means as determined by Lew's<sup>®</sup>. Express or expedited services are the responsibility of the consumer as is sending the product to Lew's<sup>®</sup> or Lew's<sup>®</sup> Authorized Agent, for Warranty Service. Lew's<sup>®</sup> and Lew's<sup>®</sup> Service Agents as authorized by Lew's<sup>®</sup> are the sole agents authorized to repair or replace Lew's<sup>®</sup> products under the terms of this warranty. Only written changes by an officer of Lew's<sup>®</sup> can alter the terms or conditions of this warranty. This warranty gives you specific legal rights including additional rights extended by some states which do not allow certain exclusions and limitations. Any action brought against Lew's<sup>®</sup> for the purpose of settling a warranty dispute shall be brought and litigated in the State of Missouri, County of Greene.

Lew's<sup>®</sup> 2253 E. Bennett, Springfield, MO 65804 Phone 1-417-881-LEW'S (5397) FAX: 1-417-881-5387

**10** Bearings System