



Maintenance and Care

TP100, TP200, TP300, TP400



Speed Spin reels are designed to be **Lighter, Faster and Stronger**

Driven by innovation – Fueled with Passion
Feel the Difference!



Reel Specifications

Model	Weight	Gear Ratio	Line Capacity	IPT
TP100	6.7 oz.	5.2:1	100 yds./4 lb.	24"
TP200	8.1 oz.	6.2:1	160 yds./8 lb.	28"
TP300	8.4 oz.	6.2:1	160 yds./10 lb.	30"
TP400	10.4 oz.	6.2:1	185 yds./12 lb.	33"

FEATURES:

- Lightweight **A360** aluminum body
- **C60** CARBON rotor
- Premium 10 bearing system and double shielded stainless steel ball bearings with Zero-Reverse one-way clutch bearing
- Models: TP200, TP300, TP400, features 6.2:1 high speed gear ratio
- Double anodized braid ready aluminum spool
- Aluminum handle with Lew's® Performance handle knob
- Speed Lube™ for exceptional smoothness and uninterrupted performance in all weather conditions
- Oversized Smooth Carbon Teflon multi-disc sealed drag system



While applying lubricant to your Tournament Speed Spin® reel, avoid using multi-purpose oil. Use lightweight silicone based oils or greases made for fishing reels. Apply oil to all bearings and main shaft. Apply grease to the bushings, pinion gear, and drive gear.

After usage your reel should be inspected for dirt or sand and cleaned if excessive buildup is present. If your reel has come in contact with saltwater it is important to flush all parts with water, dry and re-lubricate your reel. Through diligent cleaning and maintenance your Lew's® reel will provide you with years of reliability and sound performance.

For professional cleaning and maintenance send your reel postage prepaid to:

LEW'S® 3031 N. Martin, Springfield, MO 65803

877-470-5397 lews.coms

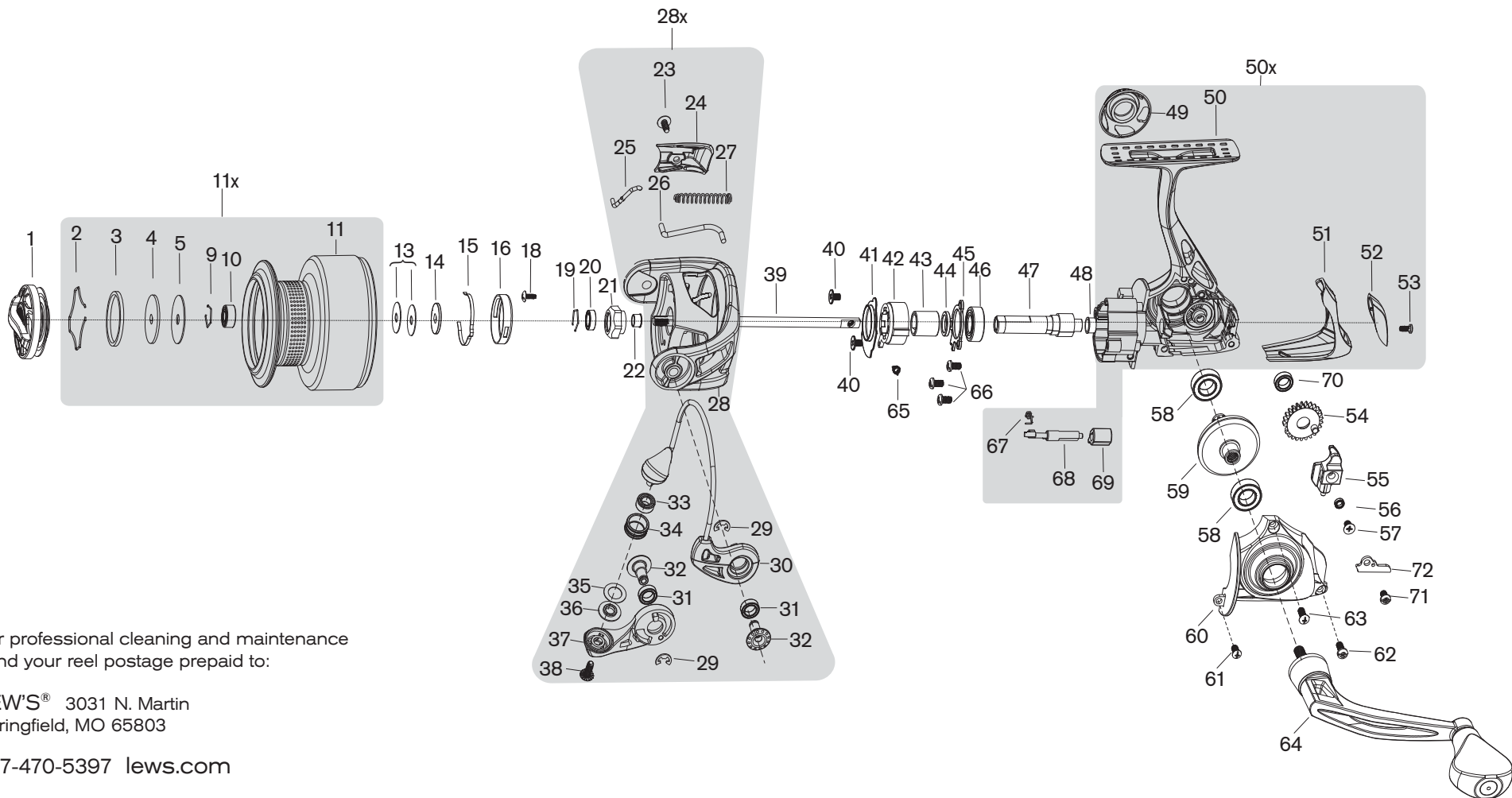
One Year Limited Warranty

Lew's® Warrants its products¹ to withstand normal² use for the purpose designed and intended when manufactured for a period of one (1) year from the original retail sale date to the original retail consumer. Lew's® will at its option repair or replace³ Lew's® products when required for the warranty period and return⁴ the product to the owner at no additional⁵ cost to the owner.

¹Numerous products have been manufactured under variations of the Lew's® name and under the Lew's® Logo by multiple businesses over the past 50 years. This warranty is specifically for products manufactured on behalf of Lew's® of Springfield, Missouri USA since January 1, 2010. Lew's® products manufactured by or on behalf of other entities prior to January 1, 2010 are not covered by this warranty. In all circumstances, this Warranty is Limited in Value to the original retail value of the product and is limited to actual damage to the Lew's® product and only the Lew's® product. ²Loss of a product, and loss/damage of a product or parts due to the attempted repair or servicing of a Lew's® product by any person or business other than Lew's® or Lew's® Authorized Warranty Service Agent, and damage caused by or resulting from abuse, misuse, lack of recommended maintenance, accident, acts of God, and shipping damages occurring in transit to Lew's® or Lew's® Authorized Agent are outside the scope of Lew's® Limited Warranty and will be repaired through Lew's® after warranty services at the expense of the consumer. ³Any products replaced by Lew's® will be new or remanufactured by a Lew's® Authorized Agent with the same or next model upgrade product. ⁴Lew's® will return warranted products to the consumer by reasonable means as determined by Lew's®. ⁵Express or expedited services are the responsibility of the consumer as is sending the product to Lew's® or Lew's® Authorized Agent, for Warranty Service. Lew's® and Lew's® Service Agents as authorized by Lew's® are the sole agents authorized to repair or replace Lew's® products under the terms of this warranty. Only written changes by an officer of Lew's® can alter the terms or conditions of this warranty.

This warranty gives you specific legal rights including additional rights extended by some states which do not allow certain exclusions and limitations. Any action brought against Lew's® for the purpose of settling a warranty dispute shall be brought and litigated in the State of Missouri, County of Greene.

Lew's® 3031 N. Martin, Springfield, MO 65803 Phone 877-470-5397 FAX: 1-417-881-5387



For professional cleaning and maintenance
send your reel postage prepaid to:

LEW'S® 3031 N. Martin
Springfield, MO 65803

877-470-5397 lews.com

KEY NO.	PART NAMES	KEY NO.	PART NAMES	KEY NO.	PART NAMES	KEY NO.	PART NAMES	KEY NO.	PART NAMES	KEY NO.	PART NAMES
1	DRAG KNOB	16	CLICK HOLDER	28x	ROTOR ASSEMBLY	40	SCREW	51	BODY TRIM	63	SCREW
2	CLIP	18	SCREW	29	E-CLIP	41	COVER PLATE	52	BODY TRIM CAP	64	HANDLE ASSEMBLY
3	BUSHING	19	HEXAGON CLIP	30	BAIL WIRE ASSEMBLY	42	ONE-WAY CLUTCH BEARING	53	SCREW	65	SPRING
4	KEY WASHER	20	BALL BEARING	31	BALL BEARING	43	CLUTCH BUSHING	54	OSCILLATION GEAR	66	SCREW
5	DRAG WASHER	21	HEXAGON NUT	32	AXLE PIN	44	WASHER	55	OSCILLATION SLIDER	67	SPRING
9	HEXAGON CLIP	22	BUSHING	33	BALL BEARING	45	COVER PLATE	56	BUSHING	68	ANTI-REVERSE CAM
10	BUSHING	23	SCREW	34	LINE ROLLER	46	BALL BEARING	57	SCREW	69	ANTI-REVERSE LEVER
11	SPOOL	24	BAIL ARM COVER	35	WASHER	47	PINION GEAR	58	BALL BEARING	70	BUSHING
11x	SPOOL ASSEMBLY	25	FLIP WIRE	36	LINE ROLLER COLLAR	48	BUSHING	59	DRIVE GEAR	71	SCREW
13	WASHER	26	KICK LEVER	37	BAIL ARM	49	HANDLE SCREW CAP	60	BODY COVER	72	OSCILLATION RETAINER
14	KEY WASHER	27	SPRING	38	SCREW	50	BODY	61	SCREW		
15	CLICK RING	28	ROTOR	39	MAIN SHAFT	50x	BODY ASSEMBLY	62	SCREW		